

LEA Name : Union SD  
Address : 354 Baker Street, Ste 2  
Rimersburg , PA 16248

County : Clarion  
AUN Number : 106169003  
LEA Type : SD

## Annual Financial Report Accuracy Certification Statement

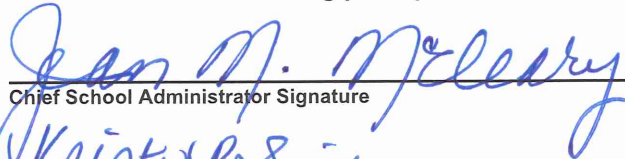
For Fiscal Year Ending  
6/30/2017

Pennsylvania Department of Education  
&  
Office of Comptroller Operations

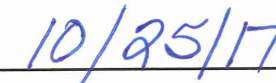
PDE-2056: Intermediate Unit

PDE-2057: School District, AVTS/CTC, Charter School,  
and Special Program Jointure

**CERTIFICATION: By signing this page I agree that the electronic data submitted is a complete and accurate statement of the financial operations and status of the local education agency for the fiscal year. It has been prepared in accordance with generally accepted accounting principles and established Commonwealth of PA reporting guidelines.**



Chief School Administrator Signature

  
Date



Board Secretary Signature

  
Date

John Stevens

Contact Person

stevensje@unionsd.net

Contact Person E-mail Address

(814)473-6311 Ext :0

Contact Person Telephone Number

(814)473-8201

Contact Person Fax Number

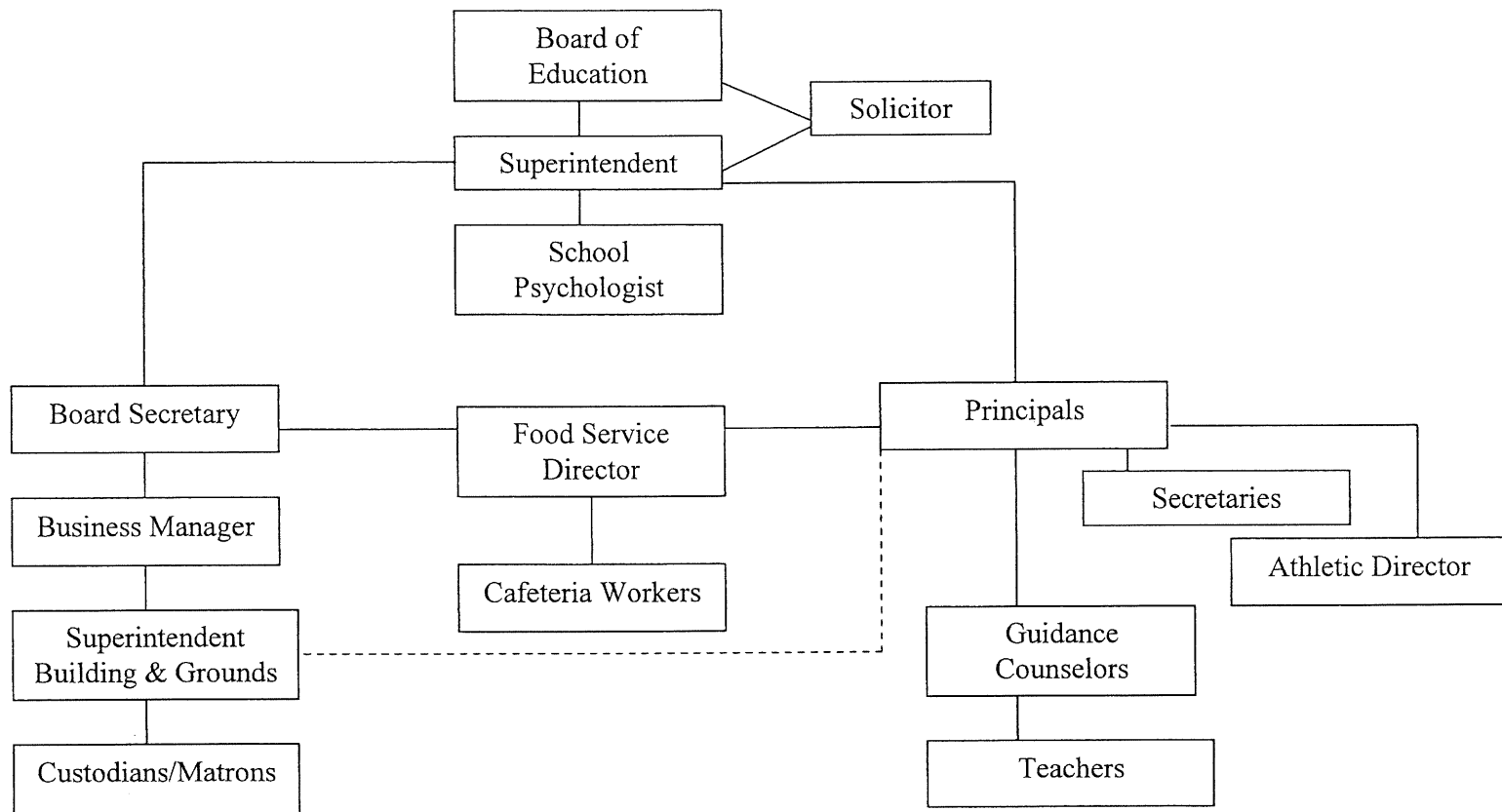
# UNION SCHOOL DISTRICT

SECTION: LOCAL BOARD PROCEDURES

TITLE: ORGANIZATION CHART

ADOPTED: September 16, 1999

REVISED: February 16, 2006



<u>Val Number</u>	<u>Description</u>	<u>Justification</u>
41550	Expenditure Detail, Salaries (Object 100) and Benefits (Object 200 series): Amounts must be entered for both Salaries and Benefits.  Function 2350, Object 100: \$0.00 Function 2350, Object 200: \$18,276.00	Based on contractual agreement.

Amounts Expressed in Whole Dollars	<u>General Fund</u> (10)	<u>Public Purpose Trust</u> (27)	<u>Other Compt Approved</u> (28)	<u>Athletic / Activity</u> (29)	<u>Capital Reserve (690,</u> <u>1850)</u> (31)
<b>Assets And Deferred Outflows Of Resources</b>					
<b>Assets</b>					
0100 Cash and Cash Equivalents	564,528				
0110 Investments	7,830,549				
0120 Taxes Receivable	357,160				
0130 Due From Other Funds	80,030				
0141 Due From Other Governments					
0142 State Revenue Receivable					
0143 Federal Revenue Receivable					
0145 Other Intergovernmental Revenue Receivable					
0146 Due from Primary Government					
0147 Due from Component Unit					
0150 Other Receivables					
0170 Inventories	32,000				
0180 Prepaid Expenses (Expenditures)					
0190 Other Current Assets					
<b>Total Assets</b>	<b>\$8,864,267</b>				
0910 Deferred Outflows of Resources					
<b>Total Assets And Deferred Outflows Of Resources</b>	<b>\$8,864,267</b>				

Amounts Expressed in Whole Dollars

	<u>Capital Reserve (1431)</u> (32)	<u>Other Capital Projects</u> <u>Fund</u> (39)	<u>Debt Service</u> (40)	<u>Permanent</u> (90)	<u>Total Governmental</u> <u>Funds</u>
<b>Assets And Deferred Outflows Of Resources</b>					
<b>Assets</b>					
0100 Cash and Cash Equivalents		228,475			793,003
0110 Investments					7,830,549
0120 Taxes Receivable					357,160
0130 Due From Other Funds					80,030
0141 Due From Other Governments					
0142 State Revenue Receivable					
0143 Federal Revenue Receivable					
0145 Other Intergovernmental Revenue Receivable					
0146 Due from Primary Government					
0147 Due from Component Unit					
0150 Other Receivables					
0170 Inventories					32,000
0180 Prepaid Expenses (Expenditures)					
0190 Other Current Assets					
<b>Total Assets</b>		<b>\$228,475</b>			<b>\$9,092,742</b>
0910 Deferred Outflows of Resources					
<b>Total Assets And Deferred Outflows Of Resources</b>		<b>\$228,475</b>			<b>\$9,092,742</b>

Amounts Expressed in Whole Dollars	<u>General Fund</u> (10)	<u>Public Purpose Trust</u> (27)	<u>Other Compt Approved</u> (28)	<u>Athletic / Activity</u> (29)	<u>Capital Reserve (690,</u> <u>1850)</u> (31)
<b>Liabilities And Deferred Inflows Of Resources And Fund Balances</b>					
<b>Liabilities</b>					
0400 Due to Other Funds					
0411 Due to Other Governments					
0412 Due to Primary Government					
0413 Due to Component Unit					
0420 Accounts Payable	4,450				
0430 Contracts Payable					
0440 Current Portion of Long-Term Debt					
0450 Short-Term Payables					
0461 Accrued Salaries and Benefits					
0462 Payroll Deductions and Withholding					
0480 Unearned Revenues					
0490 Other Current Liabilities	984,580				
<b>Total Liabilities</b>	<b>\$989,030</b>				
0950 Deferred Inflows of Resources	357,160				
<b>Fund Balances</b>					
0810 Nonspendable Fund Balance	32,000				
0820 Restricted Fund Balance					
0830 Committed Fund Balance					
0840 Assigned Fund Balance	4,400,000				
0850 Unassigned Fund Balance	3,086,077				
<b>Total Fund Balances</b>	<b>\$7,518,077</b>				
<b>Total Liabilities, Deferred Inflows Of Resources And Fund Balances</b>	<b>\$8,864,267</b>				

Amounts Expressed in Whole Dollars	<u>Capital Reserve (1431)</u> (32)	<u>Other Capital Projects</u> <u>Fund</u> (39)	<u>Debt Service</u> (40)	<u>Permanent</u> (90)	<u>Total Governmental</u> <u>Funds</u>
<b>Liabilities And Deferred Inflows Of Resources And Fund Balances</b>					
<b>Liabilities</b>					
0400 Due to Other Funds					
0411 Due to Other Governments					
0412 Due to Primary Government					
0413 Due to Component Unit					
0420 Accounts Payable					4,450
0430 Contracts Payable					
0440 Current Portion of Long-Term Debt					
0450 Short-Term Payables					
0461 Accrued Salaries and Benefits					
0462 Payroll Deductions and Withholding					
0480 Unearned Revenues					
0490 Other Current Liabilities					984,580
<b>Total Liabilities</b>					<b>\$989,030</b>
0950 Deferred Inflows of Resources					357,160
<b>Fund Balances</b>					
0810 Nonspendable Fund Balance					32,000
0820 Restricted Fund Balance					
0830 Committed Fund Balance					
0840 Assigned Fund Balance		228,475			4,628,475
0850 Unassigned Fund Balance					3,086,077
<b>Total Fund Balances</b>		<b>\$228,475</b>			<b>\$7,746,552</b>
<b>Total Liabilities, Deferred Inflows Of Resources And Fund Balances</b>		<b>\$228,475</b>			<b>\$9,092,742</b>

Amounts Expressed in Whole Dollars	<u>General Fund</u> (10)	<u>Public Purpose Trust</u> (27)	<u>Other Compt Approved</u> (28)	<u>Athletic / Activity</u> (29)	<u>Capital Reserve (690,</u> <u>1850)</u> (31)
<b>Revenues</b>					
6000 Revenue from Local Sources	2,462,860				
7000 Revenue from State Sources	8,181,655				
8000 Revenue from Federal Sources	272,109				
<b>Total Revenues</b>	<b>\$10,916,624</b>				
<b>Expenditures</b>					
1000 Instruction	6,293,552				
2000 Support Services	3,850,629				
3000 Operation of Non-Instructional Services	276,113				
4000 Facilities Acquisition, Construction and Improvement Services					
5110 Debt Service	247,396				
5130 Refund of Prior Year Revenues / Receipts					
<b>Total Expenditures</b>	<b>\$10,667,690</b>				
<b>Excess (Deficiency) Of Revenues Over Expenditures</b>	<b>\$248,934</b>				
<b>Other Financing Sources (Uses)</b>					
9110 Face Value of Bonds Issued					
9120 Proceeds from Refunding of Bonds					
9130 Bond Premiums					
9200 Proceeds from Extended-Term Financing					
9300 Interfund Transfers - IN					
9400 Sale of or Compensation for Loss of Fixed Assets					
9710 Transfers from Component Units					
9720 Transfers from Primary Governments					
9910 Other Financing Sources Not Listed in the 9000 Series					
9990 Insurance Recoveries					
5120 Debt Service – Refunded Bonds					
5150 Bond Discounts					
5200 Interfund Transfers – Out	440,306				
5300 Transfers Out to Component Units/Primary Governments					
<b>Total Other Financing Sources (Uses)</b>	<b>(\$440,306)</b>				



Amounts Expressed in Whole Dollars	<u>Capital Reserve (1431)</u> (32)	<u>Other Capital Projects</u> <u>Fund</u> (39)	<u>Debt Service</u> (40)	<u>Permanent</u> (90)	<u>Total Governmental</u> <u>Funds</u>
<b>Revenues</b>					
6000 Revenue from Local Sources		78			2,462,938
7000 Revenue from State Sources					8,181,655
8000 Revenue from Federal Sources					272,109
<b>Total Revenues</b>		<b>\$78</b>			<b>\$10,916,702</b>
<b>Expenditures</b>					
1000 Instruction					6,293,552
2000 Support Services					3,850,629
3000 Operation of Non-Instructional Services					276,113
4000 Facilities Acquisition, Construction and Improvement Services		120,306			120,306
5110 Debt Service					247,396
5130 Refund of Prior Year Revenues / Receipts					
<b>Total Expenditures</b>		<b>\$120,306</b>			<b>\$10,787,996</b>
<b>Excess (Deficiency) Of Revenues Over Expenditures</b>		<b>(\$120,228)</b>			<b>\$128,706</b>
<b>Other Financing Sources (Uses)</b>					
9110 Face Value of Bonds Issued					
9120 Proceeds from Refunding of Bonds					
9130 Bond Premiums					
9200 Proceeds from Extended-Term Financing					
9300 Interfund Transfers - IN		345,306			345,306
9400 Sale of or Compensation for Loss of Fixed Assets					
9710 Transfers from Component Units					
9720 Transfers from Primary Governments					
9910 Other Financing Sources Not Listed in the 9000 Series					
9990 Insurance Recoveries					
5120 Debt Service – Refunded Bonds					
5150 Bond Discounts					
5200 Interfund Transfers – Out					440,306
5300 Transfers Out to Component Units/Primary Governments					
<b>Total Other Financing Sources (Uses)</b>		<b>\$345,306</b>			<b>(\$95,000)</b>

Amounts Expressed in Whole Dollars

	<u>General Fund</u> (10)	<u>Public Purpose Trust</u> (27)	<u>Other Compt Approved</u> (28)	<u>Athletic / Activity</u> (29)	<u>Capital Reserve (690)</u> 1850 (31)
<b>Special And Extraordinary Items</b>					
9920 Special Items – Gains					
9930 Extraordinary Items – Gains					
5520 Special Items – Losses					
5530 Extraordinary Items – Losses					
<b>Net Change In Fund Balances</b>	<b>(\$191,372)</b>				
<b>Fund Balance</b>					
0001 Fund Balance - Beginning of Fiscal Year	7,709,447				
<b>Fund Balance - End Of Year</b>	<b>\$7,518,075</b>				

Amounts Expressed in Whole Dollars	<u>Capital Reserve (1431)</u> (32)	<u>Other Capital Projects</u> <u>Fund</u> (39)	<u>Debt Service</u> (40)	<u>Permanent</u> (90)	<u>Total Governmental</u> <u>Funds</u>
<b>Special And Extraordinary Items</b>					
9920 Special Items – Gains					
9930 Extraordinary Items – Gains					
5520 Special Items – Losses					
5530 Extraordinary Items – Losses					
<b>Net Change In Fund Balances</b>		<b>\$225,078</b>			<b>\$33,706</b>
<b>Fund Balance</b>					
0001 Fund Balance - Beginning of Fiscal Year		3,397			7,712,844
<b>Fund Balance - End Of Year</b>		<b>\$228,475</b>			<b>\$7,746,550</b>

Amounts Expressed in Whole Dollars	<u>Food Service</u> (51)	<u>Child Care</u> <u>Operations</u> (52)	<u>Other Enterprise</u> (58)	<u>TOTAL</u>	<u>Internal Service</u> (60)
<b>Assets And Deferred Outflows Of Resources</b>					
<b>Current Assets</b>					
0100 Cash and Cash Equivalents	46,154			46,154	
0110 Investments					
0130 Due From Other Funds					
0141 Due From Other Governments					
0142 State Revenue Receivable					
0143 Federal Revenue Receivable					
0146 Due from Primary Government					
0147 Due from Component Unit					
0150 Other Receivables					
0170 Inventories	16,365			16,365	
0180 Prepaid Expenses (Expenditures)					
0190 Other Current Assets					
<b>Total Current Assets</b>	<b>\$62,519</b>			<b>\$62,519</b>	
<b>Noncurrent Assets</b>					
0211 Land					
0212 Site Improvements (Net)					
0220 Buildings and Building Improvements (Net)					
0230 Machinery, Equipment and Furniture (Net)	34,726			34,726	
0250 Construction in Progress					
0260 Long Term Prepayments					
0290 Other Noncurrent Assets					
<b>Total Noncurrent Assets</b>	<b>\$34,726</b>			<b>\$34,726</b>	
0910 Deferred Outflows of Resources					
<b>Total Assets And Deferred Outflows Of Resources</b>	<b>\$97,245</b>			<b>\$97,245</b>	

Amounts Expressed in Whole Dollars	<u>Food Service</u> (51)	<u>Child Care</u> <u>Operations</u> (52)	<u>Other Enterprise</u> (58)	<u>TOTAL</u>	<u>Internal Service</u> (60)
<b>Liabilities And Deferred Inflows Of Resources And Net Position</b>					
<b>Current Liabilities</b>					
0400 Due to Other Funds					
0411 Due to Other Governments					
0413 Due to Component Unit					
0420 Accounts Payable	78,136			78,136	
0430 Contracts Payable					
0440 Current Portion of Long-Term Debt					
0450 Short-Term Payables					
0461 Accrued Salaries and Benefits					
0462 Payroll Deductions and Withholding					
0480 Unearned Revenues					
0490 Other Current Liabilities					
<b>Total Current Liabilities</b>	<b>\$78,136</b>			<b>\$78,136</b>	
<b>Noncurrent Liabilities</b>					
0510 Bonds Payable					
0520 Extended-Term Financing Agreements Payable					
0530 Lease-Purchase Obligations					
0540 Accumulated Compensated Absences					
0550 Authority Lease Obligations					
0560 Other Post-Employment Benefits (OPEB)					
0570 Net Pension Liability					
0599 Other Noncurrent Liabilities					
<b>Total Noncurrent Liabilities</b>					
<b>Total Liabilities</b>	<b>\$78,136</b>			<b>\$78,136</b>	
0950 Deferred Inflows of Resources					
<b>Net Position</b>					
0791 Net Investment in Capital Assets		34,726		34,726	
0008 Restricted Net Position (0792 – 0798)					
0799 Unrestricted Net Position		(15,617)		(15,617)	
<b>Total Net Position</b>		<b>\$19,109</b>		<b>\$19,109</b>	
<b>Total Liabilities And Deferred Inflows Of Resources And Net Position</b>		<b>\$97,245</b>		<b>\$97,245</b>	

Amounts Expressed in Whole Dollars	<u>Food Service</u> (51)	<u>Child Care Operations</u> (52)	<u>Other Enterprise</u> (58)	<u>TOTAL</u>	<u>Internal Service</u> (60)
<b>Operating Revenues</b>					
6600 Food Service Revenue	108,419			108,419	
0071 Charges for Services					
0072 Other Operating Revenue					
<b>Total Operating Revenues</b>	<b>\$108,419</b>			<b>\$108,419</b>	
<b>Operating Expenses</b>					
100 Personnel Services – Salaries	185,600			185,600	
200 Personnel Services – Employee Benefits	108,372			108,372	
300 Purchased Professional and Technical Services					
400 Purchased Property Services	4,972			4,972	
500 Other Purchased Services	3,348			3,348	
600 Supplies	155,774			155,774	
740 Depreciation	6,778			6,778	
810 Dues and Fees					
890 Miscellaneous Expenditures					
<b>Total Operating Expenses</b>	<b>\$464,844</b>			<b>\$464,844</b>	
<b>Operating Income (Loss)</b>	<b>(\$356,425)</b>			<b>(\$356,425)</b>	
<b>Non Operating Revenues (Expenses)</b>					
6500 Earnings on Investments	205			205	
6920 Contributions and Donations from Private Sources					
6930 Gains or Losses on Sale of Fixed Assets					
6991 Refunds of a Prior Year Expenditure					
7000 Revenue from State Sources	14,629			14,629	
8000 Revenue from Federal Sources	226,892			226,892	
820 Claims and Judgments Against the LEA					
830 Interest					
<b>TOTAL Non Operating Revenues (Expenses)</b>	<b>\$241,726</b>			<b>\$241,726</b>	
<b>Income (Loss) Before Contributions And Transfers</b>	<b>(\$114,699)</b>			<b>(\$114,699)</b>	

Amounts Expressed in Whole Dollars	<u>Food Service</u> (51)	<u>Child Care Operations</u> (52)	<u>Other Enterprise</u> (58)	<u>TOTAL</u>	<u>Internal Service</u> (60)
<b>Contributions, Transfers, and Special and Extraordinary Items</b>					
5200 Interfund Transfers – Out					
5300 Transfers Out to Component Units/Primary Governments					
5520 Special Items – Losses					
5530 Extraordinary Items – Losses					
9300 Interfund Transfers - IN	95,000			95,000	
9500 Capital Contributions					
9700 Transfers IN From Component Units/Primary Governments					
9920 Special Items – Gains					
9930 Extraordinary Items – Gains					
<b>Change In Net Position</b>	<b>(\$19,699)</b>			<b>(\$19,699)</b>	
0002 Net Position - Beginning of Fiscal Year	38,808			38,808	
0003 Accounting Changes / Residual Equity Transfers					
<b>Net Position - End Of Year</b>	<b>\$19,109</b>			<b>\$19,109</b>	

Amounts Expressed in Whole Dollars	<u>Food Service</u> (51)	<u>Child Care Operations</u> (52)	<u>Other Enterprise</u> (58)	<u>TOTAL</u>	<u>Internal Service(60)</u>
<b>Cash Flows From Operating Activities</b>					
0011 Cash Receipts From Users	108,419			108,419	
0012 Cash Receipts From Assessments Made to Other Funds					
0013 Cash Receipts From Earnings on Investments					
0014 Cash Receipts From Other Operating Revenue					
0015 Cash Payments To Employees For Services	293,972			293,972	
0016 Cash Payments For Insurance Claims					
0017 Cash Payments To Suppliers For Goods and Services	167,171			167,171	
0018 Cash Payments For Other Operating Expenses					
<b>Net Cash Provided By (Used For) Operating Activities</b>	<b>(\$352,724)</b>			<b>(\$352,724)</b>	
<b>Cash Flows From Non-Capital Financing Activities</b>					
0021 Receipts From Local Sources - 6000					
0022 Receipts From State Sources - 7000	14,629			14,629	
0023 Receipts From Federal Sources -8000	226,892			226,892	
0024 Notes and Loans Received (Repaid)					
0025 Interest Paid on Notes/Loans - 5100-830					
0026 Operating Transfers In (Out)/Residual Equity Trans					
0027 Operating Transfers In (Out) Primary Government / Comp Unit	95,000			95,000	
0028 Receipts From Refund of Prior Year Expenditures - 6991					
0029 Special and Extraordinary Gains (losses)					
<b>Net Cash Prov By (Used for) Non-Capital Financing Activities</b>	<b>\$336,521</b>			<b>\$336,521</b>	
<b>Cash Flows From Capital and Related Financing Activities</b>					
0031 Payments For Fac Acq, Const, and Imp - 4000	(11,296)			(11,296)	
0032 Gain / (Loss) on Sale of Fixed Assets - 6930					
0033 Proceeds From Extended Term Financing - 9200					
0034 Principal Paid on Financing Agreements					
0035 Interest Paid on Financing Agreements - 5100-830					
0036 (Inc) Dec in Contributed Capital					
<b>Net Cash Prov By (Used for) Capital and Related Financing Activities</b>	<b>(\$11,296)</b>			<b>(\$11,296)</b>	
<b>Cash Flows From Investing Activities</b>					
0041 Earnings on Investments - 6500	205			205	
0042 Purchase of Inv Securities / Deposits to Inv Pools					
0043 Receipts From Investment Pool Withdrawals					
0044 Proceeds from Sale and Maturity of Inv Securities					
0045 Loans Received (Paid)					
<b>Net Cash Prov By (Used for) Investing Activities</b>	<b>\$205</b>			<b>\$205</b>	



	<u>Food Service</u> (51)	<u>Child Care Operations</u> (52)	<u>Other Enterprise</u> (58)	<u>TOTAL</u>	<u>Internal Service</u> (60)
<b>Net Increase (Decrease) in Cash Flows</b>	(27,294)			(27,294)	
0004 Cash and Cash Equivalents Beginning of Year	73,448			73,448	
<b>Cash and Cash Equivalents at Year End</b>	<b>\$46,154</b>			<b>\$46,154</b>	
<hr/>					
<b>Reconciliation of Operating Income (Loss) To Net Cash Provided by (Used For) Operating Activities</b>					
0005 Operating Income (Loss) per REP	(356,425)			(356,425)	
<b>Adjustments</b>					
0051 Depreciation and Net Amortization	6,778			6,778	
0052 Provision for Uncollectible Accounts					
0053 Other Adjustments					
<b>Effect of Changes in Assets, Liabilities, Deferred Outflows and Deferred Inflows</b>					
0054 (Inc) Dec In Accounts Receivable (0120-0150)					
0055 Advances to Other Funds (0160)					
0056 (Inc) Dec in Inventories (0170)	(3,077)			(3,077)	
0057 (Inc) Dec in Prepaid Expenses (0180)					
0058 (Inc) Dec in Other Current or Noncurrent Assets					
0064 Deferred Outflows (0910)					
0059 Inc (Dec) in Accounts Payable (0400-0450)					
0060 Inc (Dec) in Accrued Salaries/Benefits (0461)					
0065 Inc (Dec) in Net Pension Liabilities (0570)					
0066 Inc (Dec) in Other Postemp Benefit Oblig (0560)					
0061 Inc (Dec) in Payroll Deductions/Withholding (0462)					
0062 Inc (Dec) in Unearned Revenue (0480)					
0063 Inc (Dec) in Other Current or Noncurrent Liabilities					
0067 Deferred Inflows (0950)					
<b>Total Adjustments</b>	<b>\$3,701</b>			<b>\$3,701</b>	
<b>Cash Provided By (Used for) Total</b>	<b>(\$352,724)</b>			<b>(\$352,724)</b>	

**COMBINED STATEMENT OF CASH FLOWS**  
**SCHEDULE OF NONCASH INVESTING, CAPITAL, AND FINANCING ACTIVITIES**

Explanation of Transaction and Balance Sheet Effect	Amount
<b>Total</b>	

LEA : 106169003 Union SD

Printed 10/25/2017 8:55:30 AM

Amounts Expressed in Whole Dollars	<u>Private Purpose Trust</u> (71)	<u>Investment Trust</u> (72)	<u>Pension Trust</u> (73)	<u>Activity</u> (81)
<b>Assets And Deferred Outflows Of Resources</b>				
<b>Assets</b>				
0100 Cash and Cash Equivalents	52,611			
0110 Investments	152,910			
0130 Due From Other Funds				
0147 Due from Component Unit				
0150 Other Receivables				
0170 Inventories				
0180 Prepaid Expenses (Expenditures)				
0190 Other Current Assets				
0220 Buildings and Building Improvements (Net)				
0230 Machinery, Equipment and Furniture (Net)				
<b>Total Assets</b>	<b>\$205,521</b>			
0910 Deferred Outflows of Resources				
<b>Total Assets And Deferred Outflows Of Resources</b>	<b>\$205,521</b>			

Amounts Expressed in Whole Dollars

	<u>Other Agency</u> (89)	<u>Discrete Component Units</u> (98)	<u>Discrete Component Units</u> (99)	<u>Total Fiduciary Funds</u>
<b>Assets And Deferred Outflows Of Resources</b>				
<b>Assets</b>				
0100 Cash and Cash Equivalents				52,611
0110 Investments				152,910
0130 Due From Other Funds				
0147 Due from Component Unit				
0150 Other Receivables				
0170 Inventories				
0180 Prepaid Expenses (Expenditures)				
0190 Other Current Assets				
0220 Buildings and Building Improvements (Net)				
0230 Machinery, Equipment and Furniture (Net)				
<b>Total Assets</b>				<b>\$205,521</b>
0910 Deferred Outflows of Resources				
<b>Total Assets And Deferred Outflows Of Resources</b>				<b>\$205,521</b>

Amounts Expressed in Whole Dollars

Private Purpose Trust  
(71)

Investment Trust  
(72)

Pension Trust  
(73)

Activity  
(81)

**Liabilities, Deferred Inflows Of Resources And Net Position**

**Liabilities**

0400 Due to Other Funds	
0411 Due to Other Governments	
0412 Due to Primary Government	
0413 Due to Component Unit	
0420 Accounts Payable	
0430 Contracts Payable	
0450 Short-Term Payables	
0461 Accrued Salaries and Benefits	
0462 Payroll Deductions and Withholding	
0480 Unearned Revenues	
0490 Other Current Liabilities	56,248

**Total Liabilities** \$56,248

0950 Deferred Inflows of Resources

**Net Position**

0791 Net Investment in Capital Assets	
0009 Restricted Net Position (0792 – 0798)	149,273
0799 Unrestricted Net Position	

**Total Net Position** \$149,273

**Total Liabilities, Deferred Inflows Of Resources And Net Position** \$205,521

Amounts Expressed in Whole Dollars	<u>Other Agency</u> (89)	<u>Discrete Component Units</u> (98)	<u>Discrete Component Units</u> (99)	<u>Total Fiduciary Funds</u>
<b>Liabilities, Deferred Inflows Of Resources And Net Position</b>				
<b>Liabilities</b>				
0400 Due to Other Funds				
0411 Due to Other Governments				
0412 Due to Primary Government				
0413 Due to Component Unit				
0420 Accounts Payable				
0430 Contracts Payable				
0450 Short-Term Payables				
0461 Accrued Salaries and Benefits				
0462 Payroll Deductions and Withholding				
0480 Unearned Revenues				
0490 Other Current Liabilities				56,248
<b>Total Liabilities</b>				<b>\$56,248</b>
0950 Deferred Inflows of Resources				
<b>Net Position</b>				
0791 Net Investment in Capital Assets				
0009 Restricted Net Position (0792 – 0798)				149,273
0799 Unrestricted Net Position				
<b>Total Net Position</b>				<b>\$149,273</b>
<b>Total Liabilities, Deferred Inflows Of Resources And Net Position</b>				<b>\$205,521</b>

Amounts Expressed in Whole Dollars	<u>Private Purpose Trust</u> (71)	<u>Investment Trust</u> (72)	<u>Pension Trust</u> (73)	<u>Discrete Component</u> <u>Units</u> (98)	<u>Discrete Component</u> <u>Units</u> (99)	<u>Total Fiduciary</u> <u>Funds</u>
<b>Additions</b>						
0091 Gifts and Contributions	2,789					2,789
0092 Other Additions	10,972					10,972
<b>Deductions</b>						
0093 Scholarships Awarded	5,851					5,851
0094 Other Deductions						
<b>Change In Net Position</b>	<b>\$7,910</b>					<b>\$7,910</b>
0006 Net Position – Beginning of Fiscal Year		141,363				141,363
0007 Net Position Held in Trust for Pension Benefits						
<b>Net Position - End of Fiscal Year</b>		<b>\$149,273</b>				<b>\$149,273</b>

	<u>Revenue Reported In Current Year</u>	<u>Current Year Tax Accrual</u>	<u>Prior Year Tax Accrual</u>	<u>Taxes Collected In Current Year</u>
<b><u>Revenue from Local Sources</u></b>				
6111 Current Real Estate Taxes	1,255,338.30			1,255,338.30
6113 Public Utility Realty Taxes	2,437.91			2,437.91
6114 Payments in Lieu of Current Taxes - State / Local	5,099.89			5,099.89
6120 Current Per Capita Taxes, Section 679	9,216.35			9,216.35
6141 Current Act 511 Per Capita Taxes	9,216.35			9,216.35
6143 Current Act 511 Local Services Taxes	5,730.18			5,730.18
6151 Current Act 511 Earned Income Taxes	312,360.60			312,360.60
6152 Current Act 511 Occupation Taxes	86,118.71			86,118.71
6153 Current Act 511 Real Estate Transfer Taxes	35,450.12			35,450.12
6411 Delinquent Real Estate Taxes	382,169.77			382,169.77
6420 Delinquent Per Capita Taxes, Section 679	2,054.51			2,054.51
6452 Delinquent Act 511 Occupation Taxes	13,920.78			13,920.78
6500 Earnings on Investments	119,170.06			
6700 Revenues from LEA Activities	13,649.00			
6821 State Revenue Received from Other Pennsylvania Public LEAs	52,108.22			
6832 Federal IDEA Revenue Received as Pass Through	88,229.00			
6910 Rentals	8,979.20			
6920 Contributions and Donations from Private Sources	3,719.59			
6941 Regular Day School Tuition	28,555.20			
6991 Refunds of a Prior Year Expenditure	12,291.56			
6992 Energy Efficiency Revenues and Incentives	3,234.87			
6999 Other Revenues Not Specified Above	13,810.00			
<b>TOTAL Revenue from Local Sources</b>	<b>\$2,462,860.17</b>			<b>\$2,119,113.47</b>



**Revenue Reported  
In Current Year**

**Revenue from State Sources**

7110 Basic Education Funding	5,609,873.88
7240 Driver Education - Student	435.00
7271 Special Education funds for School-Aged Pupils	564,842.25
7311 Pupil Transportation Subsidy	424,844.78
7312 Nonpublic and Charter School Pupil Transportation Subsidy	385.00
7330 Health Services (Medical, Dental, Nurse, Act 25)	10,586.16
7340 State Property Tax Reduction Allocation	140,830.11
7505 Ready to Learn Block Grant	178,789.00
7810 State Share of Social Security and Medicare Taxes	241,467.99
7820 State Share of Retirement Contributions	1,009,600.73
<b>TOTAL Revenue from State Sources</b>	<b>\$8,181,654.90</b>

	<b>Revenue Reported In Current Year</b>	
<b><u>Revenue from Federal Sources</u></b>		
8514 NCLB, Title I - Improving the Academic Achievement of the Disadvantaged	160,690.00	
8515 NCLB, Title II - Preparing, Training and Recruiting High Quality Teachers and Principals	58,265.00	
8810 School-Based Access Medicaid Reimbursement Program (SBAP) Reimbursements (Access)	49,316.38	
8820 Medical Assistance Reimbursement for Administrative Claiming (Quarterly) Program	3,837.68	
<b>TOTAL Revenue from Federal Sources</b>	<b>\$272,109.06</b>	
<b>TOTAL FROM ALL SOURCES</b>	<b>\$10,916,624.13</b>	<b>\$2,119,113.47</b>

Revenue from Local Sources	2,462,860.17
Revenue from State Sources	8,181,654.90
Revenue from Federal Sources	272,109.06
Other Financing Sources	
<b>TOTAL FROM ALL SOURCES</b>	<b>\$10,916,624.13</b>

**General Fund (10)**

<b>1000 Instruction</b>	<u><b>Total</b></u>
<b>100 Personnel Services – Salaries</b>	
100 Personnel Services – Salaries	3,037,423.00
<b>Total Personnel Services – Salaries</b>	<b>\$3,037,423.00</b>
<b>200 Personnel Services – Employee Benefits</b>	
210 Group Insurance – Contracted Provider	918,396.00
220 Social Security Contributions	232,579.00
230 PSERS Retirement Contributions	907,867.00
250 Unemployment Compensation	3,269.00
260 Workers' Compensation	24,726.00
<b>Total Personnel Services – Employee Benefits</b>	<b>\$2,086,837.00</b>
<b>300 Purchased Professional and Technical Services</b>	
322 Professional Educational Services – Ius	116,566.00
329 Professional Educational Services – Other	76,110.00
330 Other Professional Services	35,056.00
<b>Total Purchased Professional and Technical Services</b>	<b>\$227,732.00</b>
<b>400 Purchased Property Services</b>	
430 Repairs and Maintenance Services	14,328.00
<b>Total Purchased Property Services</b>	<b>\$14,328.00</b>
<b>500 Other Purchased Services</b>	
510 Student Transportation Services	6,415.00
530 Communications	1,899.00
550 Printing and Binding	737.00
561 Tuition To Other School Districts Within the State	8,380.00
562 Tuition To Pennsylvania Charter Schools	386,622.00
564 Tuition To Career and Technology Centers	210,169.00
568 Tuition To Private Residential Rehabilitative Institutions (PRRI) [In-State] and Detention Centers	9,077.00
569 Tuition – Other	88,570.00
580 Travel	9,338.00
<b>Total Other Purchased Services</b>	<b>\$721,207.00</b>
<b>600 Supplies</b>	
610 General Supplies	76,770.00
620 Energy	61.00
640 Books and Periodicals	29,488.00
<b>Total Supplies</b>	<b>\$106,319.00</b>
<b>700 Property</b>	
752 Capital Equipment – Original and Additional	27,115.00
762 Capitalized Equipment - Replacement	71,964.00
<b>Total Property</b>	<b>\$99,079.00</b>
<b>800 Other Objects</b>	
810 Dues and Fees	627.00
<b>Total Other Objects</b>	<b>\$627.00</b>
<b>Total 1000 Instruction</b>	<b>\$6,293,552.00</b>

LEA : 106169003 Union SD

Printed 10/25/2017 8:55:33 AM

Page - 2 of 14

## General Fund (10)

1100 Regular Programs – Elementary / Secondary	<u>Elementary</u>	<u>Secondary</u>	<u>Federal</u>	<u>Total</u>
<b>100 Personnel Services – Salaries</b>				
100 Personnel Services – Salaries	1,305,171.00	1,110,913.00	121,832.00	2,537,916.00
<b>Total Personnel Services – Salaries</b>	<b>\$1,305,171.00</b>	<b>\$1,110,913.00</b>	<b>\$121,832.00</b>	<b>\$2,537,916.00</b>
<b>200 Personnel Services – Employee Benefits</b>				
210 Group Insurance – Contracted Provider	409,312.00	337,465.00	32,071.00	778,848.00
220 Social Security Contributions	100,408.00	84,985.00	9,321.00	194,714.00
230 PSERS Retirement Contributions	392,233.00	331,578.00	36,586.00	760,397.00
250 Unemployment Compensation	1,306.00	1,249.00	195.00	2,750.00
260 Workers' Compensation	9,392.00	9,579.00	2,129.00	21,100.00
<b>Total Personnel Services – Employee Benefits</b>	<b>\$912,651.00</b>	<b>\$764,856.00</b>	<b>\$80,302.00</b>	<b>\$1,757,809.00</b>
<b>300 Purchased Professional and Technical Services</b>				
329 Professional Educational Services – Other	34,600.00	26,798.00		61,398.00
330 Other Professional Services	164.00	3,645.00		3,809.00
<b>Total Purchased Professional and Technical Services</b>	<b>\$34,764.00</b>	<b>\$30,443.00</b>		<b>\$65,207.00</b>
<b>400 Purchased Property Services</b>				
430 Repairs and Maintenance Services	8,326.00	5,891.00		14,217.00
<b>Total Purchased Property Services</b>	<b>\$8,326.00</b>	<b>\$5,891.00</b>		<b>\$14,217.00</b>
<b>500 Other Purchased Services</b>				
510 Student Transportation Services	1,315.00	1,237.00		2,552.00
530 Communications	697.00	1,202.00		1,899.00
550 Printing and Binding	737.00			737.00
561 Tuition To Other School Districts Within the State	565.00	7,815.00		8,380.00
562 Tuition To Pennsylvania Charter Schools	86,356.00	204,016.00		290,372.00
568 Tuition To Private Residential Rehabilitative Institutions (PRRI) [In-State] and Detention Centers		137.00		137.00
569 Tuition – Other	1,735.00	6,960.00		8,695.00
580 Travel	2,318.00	1,768.00	3,480.00	7,566.00
<b>Total Other Purchased Services</b>	<b>\$93,723.00</b>	<b>\$223,135.00</b>	<b>\$3,480.00</b>	<b>\$320,338.00</b>
<b>600 Supplies</b>				
610 General Supplies	35,330.00	31,017.00	1,968.00	68,315.00
640 Books and Periodicals	24,409.00	2,344.00		26,753.00
<b>Total Supplies</b>	<b>\$59,739.00</b>	<b>\$33,361.00</b>	<b>\$1,968.00</b>	<b>\$95,068.00</b>
<b>700 Property</b>				
752 Capital Equipment – Original and Additional	6,201.00	19,474.00		25,675.00
762 Capitalized Equipment - Replacement	259.00	70,188.00		70,447.00
<b>Total Property</b>	<b>\$6,460.00</b>	<b>\$89,662.00</b>		<b>\$96,122.00</b>
<b>Total 1100 Regular Programs – Elementary / Secondary</b>	<b>\$2,420,834.00</b>	<b>\$2,258,261.00</b>	<b>\$207,582.00</b>	<b>\$4,886,677.00</b>

LEA : 106169003 Union SD

Printed 10/25/2017 8:55:33 AM

Page - 3 of 14

**General Fund (10)**

	<u>Elementary</u>	<u>Secondary</u>	<u>Federal</u>	<u>Total</u>
<b>1110 Regular Programs</b>				
<b>100 Personnel Services – Salaries</b>				
100 Personnel Services – Salaries	1,305,171.00	1,110,913.00		2,416,084.00
<b>Total Personnel Services – Salaries</b>	<b>\$1,305,171.00</b>	<b>\$1,110,913.00</b>		<b>\$2,416,084.00</b>
<b>200 Personnel Services – Employee Benefits</b>				
210 Group Insurance – Contracted Provider	409,312.00	337,465.00		746,777.00
220 Social Security Contributions	100,408.00	84,985.00		185,393.00
230 PSERS Retirement Contributions	392,233.00	331,578.00		723,811.00
250 Unemployment Compensation	1,306.00	1,249.00		2,555.00
260 Workers' Compensation	9,392.00	9,579.00		18,971.00
<b>Total Personnel Services – Employee Benefits</b>	<b>\$912,651.00</b>	<b>\$764,856.00</b>		<b>\$1,677,507.00</b>
<b>300 Purchased Professional and Technical Services</b>				
329 Professional Educational Services – Other	34,600.00	26,798.00		61,398.00
330 Other Professional Services	164.00	3,645.00		3,809.00
<b>Total Purchased Professional and Technical Services</b>	<b>\$34,764.00</b>	<b>\$30,443.00</b>		<b>\$65,207.00</b>
<b>400 Purchased Property Services</b>				
430 Repairs and Maintenance Services	8,326.00	5,891.00		14,217.00
<b>Total Purchased Property Services</b>	<b>\$8,326.00</b>	<b>\$5,891.00</b>		<b>\$14,217.00</b>
<b>500 Other Purchased Services</b>				
510 Student Transportation Services	1,315.00	1,237.00		2,552.00
530 Communications	697.00	1,202.00		1,899.00
550 Printing and Binding	737.00			737.00
561 Tuition To Other School Districts Within the State	565.00	7,815.00		8,380.00
562 Tuition To Pennsylvania Charter Schools	86,356.00	204,016.00		290,372.00
568 Tuition To Private Residential Rehabilitative Institutions (PRRI) [In-State] and Detention Centers		137.00		137.00
569 Tuition – Other	1,735.00	6,960.00		8,695.00
580 Travel	2,318.00	1,768.00		4,086.00
<b>Total Other Purchased Services</b>	<b>\$93,723.00</b>	<b>\$223,135.00</b>		<b>\$316,858.00</b>
<b>600 Supplies</b>				
610 General Supplies	35,330.00	31,017.00		66,347.00
640 Books and Periodicals	24,409.00	2,344.00		26,753.00
<b>Total Supplies</b>	<b>\$59,739.00</b>	<b>\$33,361.00</b>		<b>\$93,100.00</b>
<b>700 Property</b>				
752 Capital Equipment – Original and Additional	6,201.00	19,474.00		25,675.00
762 Capitalized Equipment - Replacement	259.00	70,188.00		70,447.00
<b>Total Property</b>	<b>\$6,460.00</b>	<b>\$89,662.00</b>		<b>\$96,122.00</b>
<b>Total 1110 Regular Programs</b>	<b>\$2,420,834.00</b>	<b>\$2,258,261.00</b>		<b>\$4,679,095.00</b>

**General Fund (10)**

	<u>Elementary</u>	<u>Secondary</u>	<u>Federal</u>	<u>Total</u>
<b>1190 Federally-Funded Regular Programs</b>				
<b>100 Personnel Services – Salaries</b>				
100 Personnel Services – Salaries			121,832.00	121,832.00
<b>Total Personnel Services – Salaries</b>			<b>\$121,832.00</b>	<b>\$121,832.00</b>
<b>200 Personnel Services – Employee Benefits</b>				
210 Group Insurance – Contracted Provider			32,071.00	32,071.00
220 Social Security Contributions			9,321.00	9,321.00
230 PSERS Retirement Contributions			36,586.00	36,586.00
250 Unemployment Compensation			195.00	195.00
260 Workers' Compensation			2,129.00	2,129.00
<b>Total Personnel Services – Employee Benefits</b>			<b>\$80,302.00</b>	<b>\$80,302.00</b>
<b>500 Other Purchased Services</b>				
580 Travel			3,480.00	3,480.00
<b>Total Other Purchased Services</b>			<b>\$3,480.00</b>	<b>\$3,480.00</b>
<b>600 Supplies</b>				
610 General Supplies			1,968.00	1,968.00
<b>Total Supplies</b>			<b>\$1,968.00</b>	<b>\$1,968.00</b>
<b>Total 1190 Federally-Funded Regular Programs</b>			<b>\$207,582.00</b>	<b>\$207,582.00</b>

**General Fund (10)**

	<u>Elementary</u>	<u>Secondary</u>	<u>Federal</u>	<u>Total</u>
<b>1200 Special Programs – Elementary / Secondary</b>				
<b>100 Personnel Services – Salaries</b>				
100 Personnel Services – Salaries	199,677.00	237,660.00		437,337.00
<b>Total Personnel Services – Salaries</b>	<b>\$199,677.00</b>	<b>\$237,660.00</b>		<b>\$437,337.00</b>
<b>200 Personnel Services – Employee Benefits</b>				
210 Group Insurance – Contracted Provider	42,043.00	77,194.00		119,237.00
220 Social Security Contributions	14,973.00	18,136.00		33,109.00
230 PSERS Retirement Contributions	57,605.00	71,195.00		128,800.00
250 Unemployment Compensation	226.00	222.00		448.00
260 Workers' Compensation	1,614.00	1,499.00		3,113.00
<b>Total Personnel Services – Employee Benefits</b>	<b>\$116,461.00</b>	<b>\$168,246.00</b>		<b>\$284,707.00</b>
<b>300 Purchased Professional and Technical Services</b>				
322 Professional Educational Services – Ius	11,087.00	11,087.00	94,392.00	116,566.00
329 Professional Educational Services – Other	6,725.00	3,396.00		10,121.00
330 Other Professional Services	31,247.00			31,247.00
<b>Total Purchased Professional and Technical Services</b>	<b>\$49,059.00</b>	<b>\$14,483.00</b>	<b>\$94,392.00</b>	<b>\$157,934.00</b>
<b>500 Other Purchased Services</b>				
510 Student Transportation Services		2,003.00		2,003.00
562 Tuition To Pennsylvania Charter Schools	43,883.00	52,367.00		96,250.00
568 Tuition To Private Residential Rehabilitative Institutions (PRRI) [In-State] and Detention Centers	4,490.00	4,450.00		8,940.00
569 Tuition – Other	79,875.00			79,875.00
580 Travel	10.00	1,762.00		1,772.00
<b>Total Other Purchased Services</b>	<b>\$128,258.00</b>	<b>\$60,582.00</b>		<b>\$188,840.00</b>
<b>600 Supplies</b>				
610 General Supplies	3,287.00	1,502.00	3,577.00	8,366.00
640 Books and Periodicals	2,477.00		258.00	2,735.00
<b>Total Supplies</b>	<b>\$5,764.00</b>	<b>\$1,502.00</b>	<b>\$3,835.00</b>	<b>\$11,101.00</b>
<b>700 Property</b>				
752 Capital Equipment – Original and Additional	1,440.00			1,440.00
762 Capitalized Equipment - Replacement	1,517.00			1,517.00
<b>Total Property</b>	<b>\$2,957.00</b>			<b>\$2,957.00</b>
<b>800 Other Objects</b>				
810 Dues and Fees	102.00	525.00		627.00
<b>Total Other Objects</b>	<b>\$102.00</b>	<b>\$525.00</b>		<b>\$627.00</b>
<b>Total 1200 Special Programs – Elementary / Secondary</b>	<b>\$502,278.00</b>	<b>\$482,998.00</b>	<b>\$98,227.00</b>	<b>\$1,083,503.00</b>



**General Fund (10)**

**1210 Life Skills Support**

	<u>Elementary</u>	<u>Secondary</u>	<u>Federal</u>	<u>Total</u>
<b>100 Personnel Services – Salaries</b>				
100 Personnel Services – Salaries		111,673.00		111,673.00
<b>Total Personnel Services – Salaries</b>		<b>\$111,673.00</b>		<b>\$111,673.00</b>
<b>200 Personnel Services – Employee Benefits</b>				
210 Group Insurance – Contracted Provider		20,311.00		20,311.00
220 Social Security Contributions		8,505.00		8,505.00
230 PSERS Retirement Contributions		33,388.00		33,388.00
250 Unemployment Compensation		128.00		128.00
260 Workers' Compensation		877.00		877.00
<b>Total Personnel Services – Employee Benefits</b>		<b>\$63,209.00</b>		<b>\$63,209.00</b>
<b>300 Purchased Professional and Technical Services</b>				
329 Professional Educational Services – Other		1,496.00		1,496.00
<b>Total Purchased Professional and Technical Services</b>		<b>\$1,496.00</b>		<b>\$1,496.00</b>
<b>500 Other Purchased Services</b>				
510 Student Transportation Services		1,436.00		1,436.00
580 Travel		674.00		674.00
<b>Total Other Purchased Services</b>		<b>\$2,110.00</b>		<b>\$2,110.00</b>
<b>600 Supplies</b>				
610 General Supplies		1,254.00	1,091.00	2,345.00
640 Books and Periodicals			258.00	258.00
<b>Total Supplies</b>		<b>\$1,254.00</b>	<b>\$1,349.00</b>	<b>\$2,603.00</b>
<b>800 Other Objects</b>				
810 Dues and Fees		455.00		455.00
<b>Total Other Objects</b>		<b>\$455.00</b>		<b>\$455.00</b>
<b>Total 1210 Life Skills Support</b>		<b>\$180,197.00</b>	<b>\$1,349.00</b>	<b>\$181,546.00</b>

General Fund (10)

1220 Sensory Support

300 Purchased Professional and Technical Services

330 Other Professional Services

**Total Purchased Professional and Technical Services**

**Total 1220 Sensory Support**

	<u>Elementary</u>	<u>Secondary</u>	<u>Federal</u>	<u>Total</u>
330 Other Professional Services	31,247.00			31,247.00
<b>Total Purchased Professional and Technical Services</b>	<b>\$31,247.00</b>			<b>\$31,247.00</b>
<b>Total 1220 Sensory Support</b>	<b>\$31,247.00</b>			<b>\$31,247.00</b>

**General Fund (10)**

	<u>Elementary</u>	<u>Secondary</u>	<u>Federal</u>	<u>Total</u>
<b>1240 Academic Support</b>				
<b>100 Personnel Services – Salaries</b>				
100 Personnel Services – Salaries	199,677.00	125,987.00		325,664.00
<b>Total Personnel Services – Salaries</b>	<b>\$199,677.00</b>	<b>\$125,987.00</b>		<b>\$325,664.00</b>
<b>200 Personnel Services – Employee Benefits</b>				
210 Group Insurance – Contracted Provider	42,043.00	56,883.00		98,926.00
220 Social Security Contributions	14,973.00	9,631.00		24,604.00
230 PSERS Retirement Contributions	57,605.00	37,807.00		95,412.00
250 Unemployment Compensation	226.00	94.00		320.00
260 Workers' Compensation	1,614.00	622.00		2,236.00
<b>Total Personnel Services – Employee Benefits</b>	<b>\$116,461.00</b>	<b>\$105,037.00</b>		<b>\$221,498.00</b>
<b>300 Purchased Professional and Technical Services</b>				
322 Professional Educational Services – lus	11,087.00	11,087.00	94,392.00	116,566.00
329 Professional Educational Services – Other	6,725.00	1,900.00		8,625.00
<b>Total Purchased Professional and Technical Services</b>	<b>\$17,812.00</b>	<b>\$12,987.00</b>	<b>\$94,392.00</b>	<b>\$125,191.00</b>
<b>500 Other Purchased Services</b>				
510 Student Transportation Services		567.00		567.00
562 Tuition To Pennsylvania Charter Schools	43,883.00	52,367.00		96,250.00
568 Tuition To Private Residential Rehabilitative Institutions (PRRI) [In-State] and Detention Centers	4,490.00	4,450.00		8,940.00
569 Tuition – Other	79,875.00			79,875.00
580 Travel	10.00	1,088.00		1,098.00
<b>Total Other Purchased Services</b>	<b>\$128,258.00</b>	<b>\$58,472.00</b>		<b>\$186,730.00</b>
<b>600 Supplies</b>				
610 General Supplies	3,287.00	248.00	2,486.00	6,021.00
640 Books and Periodicals	2,477.00			2,477.00
<b>Total Supplies</b>	<b>\$5,764.00</b>	<b>\$248.00</b>	<b>\$2,486.00</b>	<b>\$8,498.00</b>
<b>700 Property</b>				
752 Capital Equipment – Original and Additional	1,440.00			1,440.00
762 Capitalized Equipment - Replacement	1,517.00			1,517.00
<b>Total Property</b>	<b>\$2,957.00</b>			<b>\$2,957.00</b>
<b>800 Other Objects</b>				
810 Dues and Fees	102.00	70.00		172.00
<b>Total Other Objects</b>	<b>\$102.00</b>	<b>\$70.00</b>		<b>\$172.00</b>
<b>Total 1240 Academic Support</b>	<b>\$471,031.00</b>	<b>\$302,801.00</b>	<b>\$96,878.00</b>	<b>\$870,710.00</b>

**General Fund (10)**

	<u>Elementary</u>	<u>Secondary</u>	<u>Federal</u>	<u>Total</u>
<b>1241 Learning Support – Public</b>				
<b>100 Personnel Services – Salaries</b>				
100 Personnel Services – Salaries	190,354.00	121,326.00		311,680.00
<b>Total Personnel Services – Salaries</b>	<b>\$190,354.00</b>	<b>\$121,326.00</b>		<b>\$311,680.00</b>
<b>200 Personnel Services – Employee Benefits</b>				
210 Group Insurance – Contracted Provider	37,981.00	54,852.00		92,833.00
220 Social Security Contributions	14,260.00	9,274.00		23,534.00
230 PSERS Retirement Contributions	54,805.00	36,407.00		91,212.00
250 Unemployment Compensation	215.00	89.00		304.00
260 Workers' Compensation	1,538.00	586.00		2,124.00
<b>Total Personnel Services – Employee Benefits</b>	<b>\$108,799.00</b>	<b>\$101,208.00</b>		<b>\$210,007.00</b>
<b>300 Purchased Professional and Technical Services</b>				
322 Professional Educational Services – Ius	11,087.00	11,087.00	94,392.00	116,566.00
329 Professional Educational Services – Other	6,725.00	1,900.00		8,625.00
<b>Total Purchased Professional and Technical Services</b>	<b>\$17,812.00</b>	<b>\$12,987.00</b>	<b>\$94,392.00</b>	<b>\$125,191.00</b>
<b>500 Other Purchased Services</b>				
510 Student Transportation Services		143.00		143.00
562 Tuition To Pennsylvania Charter Schools	43,883.00	52,367.00		96,250.00
568 Tuition To Private Residential Rehabilitative Institutions (PRRI) [In-State] and Detention Centers	4,490.00	4,450.00		8,940.00
569 Tuition – Other	79,875.00			79,875.00
580 Travel	10.00	1,088.00		1,098.00
<b>Total Other Purchased Services</b>	<b>\$128,258.00</b>	<b>\$58,048.00</b>		<b>\$186,306.00</b>
<b>600 Supplies</b>				
610 General Supplies	2,673.00		2,486.00	5,159.00
640 Books and Periodicals	2,477.00			2,477.00
<b>Total Supplies</b>	<b>\$5,150.00</b>		<b>\$2,486.00</b>	<b>\$7,636.00</b>
<b>700 Property</b>				
752 Capital Equipment – Original and Additional	1,440.00			1,440.00
762 Capitalized Equipment - Replacement	1,517.00			1,517.00
<b>Total Property</b>	<b>\$2,957.00</b>			<b>\$2,957.00</b>
<b>Total 1241 Learning Support – Public</b>	<b>\$453,330.00</b>	<b>\$293,569.00</b>	<b>\$96,878.00</b>	<b>\$843,777.00</b>

**General Fund (10)**

**1243 Gifted Support**

	<u>Elementary</u>	<u>Secondary</u>	<u>Federal</u>	<u>Total</u>
<b>100 Personnel Services – Salaries</b>				
100 Personnel Services – Salaries	9,323.00	4,661.00		13,984.00
<b>Total Personnel Services – Salaries</b>	<b>\$9,323.00</b>	<b>\$4,661.00</b>		<b>\$13,984.00</b>
<b>200 Personnel Services – Employee Benefits</b>				
210 Group Insurance – Contracted Provider	4,062.00	2,031.00		6,093.00
220 Social Security Contributions	713.00	357.00		1,070.00
230 PSERS Retirement Contributions	2,800.00	1,400.00		4,200.00
250 Unemployment Compensation	11.00	5.00		16.00
260 Workers' Compensation	76.00	36.00		112.00
<b>Total Personnel Services – Employee Benefits</b>	<b>\$7,662.00</b>	<b>\$3,829.00</b>		<b>\$11,491.00</b>
<b>500 Other Purchased Services</b>				
510 Student Transportation Services		424.00		424.00
<b>Total Other Purchased Services</b>		<b>\$424.00</b>		<b>\$424.00</b>
<b>600 Supplies</b>				
610 General Supplies	614.00	248.00		862.00
<b>Total Supplies</b>	<b>\$614.00</b>	<b>\$248.00</b>		<b>\$862.00</b>
<b>800 Other Objects</b>				
810 Dues and Fees	102.00	70.00		172.00
<b>Total Other Objects</b>	<b>\$102.00</b>	<b>\$70.00</b>		<b>\$172.00</b>
<b>Total 1243 Gifted Support</b>	<b>\$17,701.00</b>	<b>\$9,232.00</b>		<b>\$26,933.00</b>

**General Fund (10)**

**1300 Vocational Education**

**100 Personnel Services – Salaries**

100 Personnel Services – Salaries

**Total Personnel Services – Salaries**

**200 Personnel Services – Employee Benefits**

210 Group Insurance – Contracted Provider

220 Social Security Contributions

230 PSERS Retirement Contributions

250 Unemployment Compensation

260 Workers' Compensation

**Total Personnel Services – Employee Benefits**

**300 Purchased Professional and Technical Services**

329 Professional Educational Services – Other

**Total Purchased Professional and Technical Services**

**400 Purchased Property Services**

430 Repairs and Maintenance Services

**Total Purchased Property Services**

**500 Other Purchased Services**

564 Tuition To Career and Technology Centers

**Total Other Purchased Services**

**Total 1300 Vocational Education**

	<u>Elementary</u>	<u>Secondary</u>	<u>Federal</u>	<u>Total</u>
		49,660.00		49,660.00
		<b>\$49,660.00</b>		<b>\$49,660.00</b>
		20,311.00		20,311.00
		3,799.00		3,799.00
		14,913.00		14,913.00
		55.00		55.00
		406.00		406.00
		<b>\$39,484.00</b>		<b>\$39,484.00</b>
		4,591.00		4,591.00
		<b>\$4,591.00</b>		<b>\$4,591.00</b>
		111.00		111.00
		<b>\$111.00</b>		<b>\$111.00</b>
		210,169.00		210,169.00
		<b>\$210,169.00</b>		<b>\$210,169.00</b>
		<b>\$304,015.00</b>		<b>\$304,015.00</b>

**General Fund (10)**

	<u>Elementary</u>	<u>Secondary</u>	<u>Federal</u>	<u>Total</u>
<b>1400 Other Instructional Programs – Elementary / Secondary</b>				
<b>100 Personnel Services – Salaries</b>				
100 Personnel Services – Salaries	9,060.00	3,450.00		12,510.00
<b>Total Personnel Services – Salaries</b>	<b>\$9,060.00</b>	<b>\$3,450.00</b>		<b>\$12,510.00</b>
<b>200 Personnel Services – Employee Benefits</b>				
220 Social Security Contributions	693.00	264.00		957.00
230 PSERS Retirement Contributions	2,721.00	1,036.00		3,757.00
250 Unemployment Compensation	12.00	4.00		16.00
260 Workers' Compensation	70.00	37.00		107.00
<b>Total Personnel Services – Employee Benefits</b>	<b>\$3,496.00</b>	<b>\$1,341.00</b>		<b>\$4,837.00</b>
<b>500 Other Purchased Services</b>				
510 Student Transportation Services	1,860.00			1,860.00
<b>Total Other Purchased Services</b>	<b>\$1,860.00</b>			<b>\$1,860.00</b>
<b>600 Supplies</b>				
610 General Supplies	89.00			89.00
620 Energy		61.00		61.00
<b>Total Supplies</b>	<b>\$89.00</b>	<b>\$61.00</b>		<b>\$150.00</b>
<b>Total 1400 Other Instructional Programs – Elementary / Secondary</b>	<b>\$14,505.00</b>	<b>\$4,852.00</b>		<b>\$19,357.00</b>

General Fund (10)

1410 Drivers' Education

100 Personnel Services – Salaries

100 Personnel Services – Salaries

**Total Personnel Services – Salaries**

200 Personnel Services – Employee Benefits

220 Social Security Contributions

230 PSERS Retirement Contributions

250 Unemployment Compensation

260 Workers' Compensation

**Total Personnel Services – Employee Benefits**

600 Supplies

620 Energy

**Total Supplies**

**Total 1410 Drivers' Education**

	<u>Elementary</u>	<u>Secondary</u>	<u>Federal</u>	<u>Total</u>
		3,450.00		3,450.00
		<b>\$3,450.00</b>		<b>\$3,450.00</b>
		264.00		264.00
		1,036.00		1,036.00
		4.00		4.00
		37.00		37.00
		<b>\$1,341.00</b>		<b>\$1,341.00</b>
		61.00		61.00
		<b>\$61.00</b>		<b>\$61.00</b>
		<b>\$4,852.00</b>		<b>\$4,852.00</b>



**General Fund (10)**

**1420 Summer School**

**100 Personnel Services – Salaries**

100 Personnel Services – Salaries

	<u>Elementary</u>	<u>Secondary</u>	<u>Federal</u>	<u>Total</u>
	9,060.00			9,060.00
<b>Total Personnel Services – Salaries</b>	<b>\$9,060.00</b>			<b>\$9,060.00</b>

**200 Personnel Services – Employee Benefits**

220 Social Security Contributions

230 PSERS Retirement Contributions

250 Unemployment Compensation

260 Workers' Compensation

	693.00			693.00
	2,721.00			2,721.00
	12.00			12.00
	70.00			70.00
<b>Total Personnel Services – Employee Benefits</b>	<b>\$3,496.00</b>			<b>\$3,496.00</b>

**500 Other Purchased Services**

510 Student Transportation Services

	1,860.00			1,860.00
<b>Total Other Purchased Services</b>	<b>\$1,860.00</b>			<b>\$1,860.00</b>

**600 Supplies**

610 General Supplies

	89.00			89.00
<b>Total Supplies</b>	<b>\$89.00</b>			<b>\$89.00</b>

**Total 1420 Summer School**

	<b>\$14,505.00</b>			<b>\$14,505.00</b>
--	--------------------	--	--	--------------------

**General Fund (10)**

**2000 Support Services**

Total

**100 Personnel Services – Salaries**

100 Personnel Services – Salaries

1,460,195.00

**Total Personnel Services – Salaries**

**\$1,460,195.00**

**200 Personnel Services – Employee Benefits**

210 Group Insurance – Contracted Provider

553,089.00

220 Social Security Contributions

111,471.00

230 PSERS Retirement Contributions

426,567.00

240 Tuition Reimbursement

3,740.00

250 Unemployment Compensation

1,512.00

260 Workers' Compensation

11,681.00

**Total Personnel Services – Employee Benefits**

**\$1,108,060.00**

**300 Purchased Professional and Technical Services**

329 Professional Educational Services – Other

15,766.00

330 Other Professional Services

45,795.00

390 Other Purchased Professional and Technical Services

33,643.00

**Total Purchased Professional and Technical Services**

**\$95,204.00**

**400 Purchased Property Services**

410 Cleaning Services

7,803.00

420 Utility Services

88,454.00

430 Repairs and Maintenance Services

59,749.00

440 Rentals

1,008.00

**Total Purchased Property Services**

**\$157,014.00**

**500 Other Purchased Services**

510 Student Transportation Services

695.00

513 Contracted Carriers

540,389.00

520 Insurance – General

974.00

521 Fire Insurance

25,833.53

522 Automotive Liability Insurance

5,861.00

523 General Property and Liability Insurance

7,504.47

530 Communications

26,330.00

549 Other Advertising/Public Relations

2,164.00

550 Printing and Binding

2,803.00

580 Travel

22,496.00

595 IU Payments By Withholding

5,112.00

**Total Other Purchased Services**

**\$640,162.00**

**600 Supplies**

610 General Supplies

111,424.00

620 Energy

117,114.00

640 Books and Periodicals

31,166.00

650 Supplies & Fees – Technology Related

(1,430.00)

**Total Supplies**

**\$258,274.00**

**700 Property**

752 Capital Equipment – Original and Additional

29,915.00

**General Fund (10)**

**2000 Support Services**

**Total**

**700 Property**

762 Capitalized Equipment - Replacement

94,244.00

**Total Property**

**\$124,159.00**

**800 Other Objects**

810 Dues and Fees

7,561.00

**Total Other Objects**

**\$7,561.00**

**Total 2000 Support Services**

**\$3,850,629.00**

**General Fund (10)**

	<u>Elementary</u>	<u>Secondary</u>	<u>Federal</u>	<u>Total</u>
<b>2100 Support Services – Students</b>				
<b>100 Personnel Services – Salaries</b>				
100 Personnel Services – Salaries	130,213.00	138,342.00		268,555.00
<b>Total Personnel Services – Salaries</b>	<b>\$130,213.00</b>	<b>\$138,342.00</b>		<b>\$268,555.00</b>
<b>200 Personnel Services – Employee Benefits</b>				
210 Group Insurance – Contracted Provider	42,107.00	23,221.00		65,328.00
220 Social Security Contributions	9,962.00	10,583.00		20,545.00
230 PSERS Retirement Contributions	39,103.00	40,373.00		79,476.00
250 Unemployment Compensation	136.00	134.00		270.00
260 Workers' Compensation	1,009.00	1,008.00		2,017.00
<b>Total Personnel Services – Employee Benefits</b>	<b>\$92,317.00</b>	<b>\$75,319.00</b>		<b>\$167,636.00</b>
<b>300 Purchased Professional and Technical Services</b>				
330 Other Professional Services		1,555.00		1,555.00
<b>Total Purchased Professional and Technical Services</b>		<b>\$1,555.00</b>		<b>\$1,555.00</b>
<b>500 Other Purchased Services</b>				
510 Student Transportation Services	29.00	666.00		695.00
530 Communications		35.00		35.00
580 Travel	51.00	249.00	1,330.00	1,630.00
<b>Total Other Purchased Services</b>	<b>\$80.00</b>	<b>\$950.00</b>	<b>\$1,330.00</b>	<b>\$2,360.00</b>
<b>600 Supplies</b>				
610 General Supplies	1,759.00	5,222.00	205.00	7,186.00
640 Books and Periodicals		1,600.00		1,600.00
<b>Total Supplies</b>	<b>\$1,759.00</b>	<b>\$6,822.00</b>	<b>\$205.00</b>	<b>\$8,786.00</b>
<b>700 Property</b>				
762 Capitalized Equipment - Replacement	1,517.00			1,517.00
<b>Total Property</b>	<b>\$1,517.00</b>			<b>\$1,517.00</b>
<b>Total 2100 Support Services – Students</b>	<b>\$225,886.00</b>	<b>\$222,988.00</b>	<b>\$1,535.00</b>	<b>\$450,409.00</b>

**General Fund (10)**

	<u>Elementary</u>	<u>Secondary</u>	<u>Federal</u>	<u>Total</u>
<b>2120 Guidance Services</b>				
<b>100 Personnel Services – Salaries</b>				
100 Personnel Services – Salaries	61,513.00	69,644.00		131,157.00
<b>Total Personnel Services – Salaries</b>	<b>\$61,513.00</b>	<b>\$69,644.00</b>		<b>\$131,157.00</b>
<b>200 Personnel Services – Employee Benefits</b>				
210 Group Insurance – Contracted Provider	20,311.00	1,426.00		21,737.00
220 Social Security Contributions	4,706.00	5,328.00		10,034.00
230 PSERS Retirement Contributions	18,472.00	19,743.00		38,215.00
250 Unemployment Compensation	64.00	64.00		128.00
260 Workers' Compensation	480.00	480.00		960.00
<b>Total Personnel Services – Employee Benefits</b>	<b>\$44,033.00</b>	<b>\$27,041.00</b>		<b>\$71,074.00</b>
<b>300 Purchased Professional and Technical Services</b>				
330 Other Professional Services		1,555.00		1,555.00
<b>Total Purchased Professional and Technical Services</b>		<b>\$1,555.00</b>		<b>\$1,555.00</b>
<b>500 Other Purchased Services</b>				
510 Student Transportation Services	29.00	666.00		695.00
530 Communications		35.00		35.00
580 Travel	20.00	219.00		239.00
<b>Total Other Purchased Services</b>	<b>\$49.00</b>	<b>\$920.00</b>		<b>\$969.00</b>
<b>600 Supplies</b>				
610 General Supplies	71.00	3,536.00		3,607.00
640 Books and Periodicals		1,600.00		1,600.00
<b>Total Supplies</b>	<b>\$71.00</b>	<b>\$5,136.00</b>		<b>\$5,207.00</b>
<b>700 Property</b>				
762 Capitalized Equipment - Replacement	1,517.00			1,517.00
<b>Total Property</b>	<b>\$1,517.00</b>			<b>\$1,517.00</b>
<b>Total 2120 Guidance Services</b>	<b>\$107,183.00</b>	<b>\$104,296.00</b>		<b>\$211,479.00</b>

**General Fund (10)**

	<u>Elementary</u>	<u>Secondary</u>	<u>Federal</u>	<u>Total</u>
<b>2140 Psychological Services</b>				
<b>100 Personnel Services – Salaries</b>				
100 Personnel Services – Salaries	36,683.00	36,682.00		73,365.00
<b>Total Personnel Services – Salaries</b>	<b>\$36,683.00</b>	<b>\$36,682.00</b>		<b>\$73,365.00</b>
<b>200 Personnel Services – Employee Benefits</b>				
210 Group Insurance – Contracted Provider	3,640.00	3,640.00		7,280.00
220 Social Security Contributions	2,806.00	2,806.00		5,612.00
230 PSERS Retirement Contributions	11,016.00	11,016.00		22,032.00
250 Unemployment Compensation	36.00	35.00		71.00
260 Workers' Compensation	275.00	275.00		550.00
<b>Total Personnel Services – Employee Benefits</b>	<b>\$17,773.00</b>	<b>\$17,772.00</b>		<b>\$35,545.00</b>
<b>500 Other Purchased Services</b>				
580 Travel			1,000.00	1,000.00
<b>Total Other Purchased Services</b>			<b>\$1,000.00</b>	<b>\$1,000.00</b>
<b>600 Supplies</b>				
610 General Supplies	1,041.00	1,041.00		2,082.00
<b>Total Supplies</b>	<b>\$1,041.00</b>	<b>\$1,041.00</b>		<b>\$2,082.00</b>
<b>Total 2140 Psychological Services</b>	<b>\$55,497.00</b>	<b>\$55,495.00</b>	<b>\$1,000.00</b>	<b>\$111,992.00</b>

**General Fund (10)**

	<u>Elementary</u>	<u>Secondary</u>	<u>Federal</u>	<u>Total</u>
<b>2150 Speech Pathology and Audiology Services</b>				
<b>100 Personnel Services – Salaries</b>				
100 Personnel Services – Salaries	18,457.00	18,456.00		36,913.00
<b>Total Personnel Services – Salaries</b>	<b>\$18,457.00</b>	<b>\$18,456.00</b>		<b>\$36,913.00</b>
<b>200 Personnel Services – Employee Benefits</b>				
210 Group Insurance – Contracted Provider	8,691.00	8,690.00		17,381.00
220 Social Security Contributions	1,412.00	1,412.00		2,824.00
230 PSERS Retirement Contributions	5,543.00	5,542.00		11,085.00
250 Unemployment Compensation	20.00	20.00		40.00
260 Workers' Compensation	146.00	145.00		291.00
<b>Total Personnel Services – Employee Benefits</b>	<b>\$15,812.00</b>	<b>\$15,809.00</b>		<b>\$31,621.00</b>
<b>500 Other Purchased Services</b>				
580 Travel			330.00	330.00
<b>Total Other Purchased Services</b>			<b>\$330.00</b>	<b>\$330.00</b>
<b>600 Supplies</b>				
610 General Supplies	531.00	530.00	205.00	1,266.00
<b>Total Supplies</b>	<b>\$531.00</b>	<b>\$530.00</b>	<b>\$205.00</b>	<b>\$1,266.00</b>
<b>Total 2150 Speech Pathology and Audiology Services</b>	<b>\$34,800.00</b>	<b>\$34,795.00</b>	<b>\$535.00</b>	<b>\$70,130.00</b>

**General Fund (10)**

	<u>Elementary</u>	<u>Secondary</u>	<u>Federal</u>	<u>Total</u>
<b>2190 Other Student Services</b>				
<b>100 Personnel Services – Salaries</b>				
100 Personnel Services – Salaries	13,560.00	13,560.00		27,120.00
<b>Total Personnel Services – Salaries</b>	<b>\$13,560.00</b>	<b>\$13,560.00</b>		<b>\$27,120.00</b>
<b>200 Personnel Services – Employee Benefits</b>				
210 Group Insurance – Contracted Provider	9,465.00	9,465.00		18,930.00
220 Social Security Contributions	1,038.00	1,037.00		2,075.00
230 PSERS Retirement Contributions	4,072.00	4,072.00		8,144.00
250 Unemployment Compensation	16.00	15.00		31.00
260 Workers' Compensation	108.00	108.00		216.00
<b>Total Personnel Services – Employee Benefits</b>	<b>\$14,699.00</b>	<b>\$14,697.00</b>		<b>\$29,396.00</b>
<b>500 Other Purchased Services</b>				
580 Travel	31.00	30.00		61.00
<b>Total Other Purchased Services</b>	<b>\$31.00</b>	<b>\$30.00</b>		<b>\$61.00</b>
<b>600 Supplies</b>				
610 General Supplies	116.00	115.00		231.00
<b>Total Supplies</b>	<b>\$116.00</b>	<b>\$115.00</b>		<b>\$231.00</b>
<b>Total 2190 Other Student Services</b>	<b>\$28,406.00</b>	<b>\$28,402.00</b>		<b>\$56,808.00</b>



**General Fund (10)**

2200 Support Services – Instructional Staff	<u>Elementary</u>	<u>Secondary</u>	<u>Federal</u>	<u>Total</u>
<b>100 Personnel Services – Salaries</b>				
100 Personnel Services – Salaries	52,319.00	3,536.00		55,855.00
<b>Total Personnel Services – Salaries</b>	<b>\$52,319.00</b>	<b>\$3,536.00</b>		<b>\$55,855.00</b>
<b>200 Personnel Services – Employee Benefits</b>				
210 Group Insurance – Contracted Provider	6,093.00			6,093.00
220 Social Security Contributions	3,968.00	271.00		4,239.00
230 PSERS Retirement Contributions	15,575.00	1,062.00		16,637.00
240 Tuition Reimbursement	2,400.00	1,340.00		3,740.00
250 Unemployment Compensation	45.00	14.00		59.00
260 Workers' Compensation	254.00	113.00		367.00
<b>Total Personnel Services – Employee Benefits</b>	<b>\$28,335.00</b>	<b>\$2,800.00</b>		<b>\$31,135.00</b>
<b>300 Purchased Professional and Technical Services</b>				
329 Professional Educational Services – Other	761.00			761.00
<b>Total Purchased Professional and Technical Services</b>	<b>\$761.00</b>			<b>\$761.00</b>
<b>400 Purchased Property Services</b>				
430 Repairs and Maintenance Services		165.00		165.00
<b>Total Purchased Property Services</b>		<b>\$165.00</b>		<b>\$165.00</b>
<b>500 Other Purchased Services</b>				
580 Travel	395.00	435.00	8,430.00	9,260.00
<b>Total Other Purchased Services</b>	<b>\$395.00</b>	<b>\$435.00</b>	<b>\$8,430.00</b>	<b>\$9,260.00</b>
<b>600 Supplies</b>				
610 General Supplies	1,557.00	14.00	189.00	1,760.00
640 Books and Periodicals	9,399.00	2,081.00		11,480.00
<b>Total Supplies</b>	<b>\$10,956.00</b>	<b>\$2,095.00</b>	<b>\$189.00</b>	<b>\$13,240.00</b>
<b>Total 2200 Support Services – Instructional Staff</b>	<b>\$92,766.00</b>	<b>\$9,031.00</b>	<b>\$8,619.00</b>	<b>\$110,416.00</b>

**General Fund (10)**

	<u>Elementary</u>	<u>Secondary</u>	<u>Federal</u>	<u>Total</u>
<b>2250 School Library Services</b>				
<b>100 Personnel Services – Salaries</b>				
100 Personnel Services – Salaries	52,319.00	3,536.00		55,855.00
<b>Total Personnel Services – Salaries</b>	<b>\$52,319.00</b>	<b>\$3,536.00</b>		<b>\$55,855.00</b>
<b>200 Personnel Services – Employee Benefits</b>				
210 Group Insurance – Contracted Provider	6,093.00			6,093.00
220 Social Security Contributions	3,968.00	271.00		4,239.00
230 PSERS Retirement Contributions	15,575.00	1,062.00		16,637.00
250 Unemployment Compensation	45.00	14.00		59.00
260 Workers' Compensation	254.00	113.00		367.00
<b>Total Personnel Services – Employee Benefits</b>	<b>\$25,935.00</b>	<b>\$1,460.00</b>		<b>\$27,395.00</b>
<b>300 Purchased Professional and Technical Services</b>				
329 Professional Educational Services – Other	761.00			761.00
<b>Total Purchased Professional and Technical Services</b>	<b>\$761.00</b>			<b>\$761.00</b>
<b>400 Purchased Property Services</b>				
430 Repairs and Maintenance Services		165.00		165.00
<b>Total Purchased Property Services</b>		<b>\$165.00</b>		<b>\$165.00</b>
<b>600 Supplies</b>				
610 General Supplies	1,557.00	14.00		1,571.00
640 Books and Periodicals	9,399.00	2,081.00		11,480.00
<b>Total Supplies</b>	<b>\$10,956.00</b>	<b>\$2,095.00</b>		<b>\$13,051.00</b>
<b>Total 2250 School Library Services</b>	<b>\$89,971.00</b>	<b>\$7,256.00</b>		<b>\$97,227.00</b>

**General Fund (10)**

	<u>Elementary</u>	<u>Secondary</u>	<u>Federal</u>	<u>Total</u>
<b>2270 Instructional Staff Professional Development Services</b>				
<b>200 <u>Personnel Services – Employee Benefits</u></b>				
240 Tuition Reimbursement	2,400.00	1,340.00		3,740.00
<b>Total Personnel Services – Employee Benefits</b>	<b>\$2,400.00</b>	<b>\$1,340.00</b>		<b>\$3,740.00</b>
<b>500 <u>Other Purchased Services</u></b>				
580 Travel	395.00	435.00	8,430.00	9,260.00
<b>Total Other Purchased Services</b>	<b>\$395.00</b>	<b>\$435.00</b>	<b>\$8,430.00</b>	<b>\$9,260.00</b>
<b>600 <u>Supplies</u></b>				
610 General Supplies			189.00	189.00
<b>Total Supplies</b>			<b>\$189.00</b>	<b>\$189.00</b>
<b>Total 2270 Instructional Staff Professional Development Services</b>	<b>\$2,795.00</b>	<b>\$1,775.00</b>	<b>\$8,619.00</b>	<b>\$13,189.00</b>

**General Fund (10)**

	<u>Elementary</u>	<u>Secondary</u>	<u>Federal</u>	<u>Total</u>
<b>2300 Support Services – Administration</b>				
<b>100 Personnel Services – Salaries</b>				
100 Personnel Services – Salaries	139,984.00	125,327.00		452,413.00
<b>Total Personnel Services – Salaries</b>	<b>\$139,984.00</b>	<b>\$125,327.00</b>		<b>\$452,413.00</b>
<b>200 Personnel Services – Employee Benefits</b>				
210 Group Insurance – Contracted Provider	43,723.00	26,699.00		186,423.00
220 Social Security Contributions	10,717.00	9,607.00		34,847.00
230 PSERS Retirement Contributions	42,037.00	36,465.00		129,319.00
250 Unemployment Compensation	147.00	131.00		449.00
260 Workers' Compensation	1,581.00	1,359.00		4,230.00
<b>Total Personnel Services – Employee Benefits</b>	<b>\$98,205.00</b>	<b>\$74,261.00</b>		<b>\$355,268.00</b>
<b>300 Purchased Professional and Technical Services</b>				
329 Professional Educational Services – Other	1,929.00	2,631.00		4,560.00
330 Other Professional Services				24,513.00
390 Other Purchased Professional and Technical Services	2,802.00	1,605.00		33,643.00
<b>Total Purchased Professional and Technical Services</b>	<b>\$4,731.00</b>	<b>\$4,236.00</b>		<b>\$62,716.00</b>
<b>400 Purchased Property Services</b>				
430 Repairs and Maintenance Services	4,276.00	10,453.00		14,729.00
440 Rentals				1,008.00
<b>Total Purchased Property Services</b>	<b>\$4,276.00</b>	<b>\$10,453.00</b>		<b>\$15,737.00</b>
<b>500 Other Purchased Services</b>				
520 Insurance – General				974.00
530 Communications	106.00	601.00		707.00
549 Other Advertising/Public Relations				2,164.00
550 Printing and Binding		1,281.00		1,281.00
580 Travel	1,113.00	2,338.00	570.00	9,802.00
<b>Total Other Purchased Services</b>	<b>\$1,219.00</b>	<b>\$4,220.00</b>	<b>\$570.00</b>	<b>\$14,928.00</b>
<b>600 Supplies</b>				
610 General Supplies	10,241.00	3,032.00		18,575.00
640 Books and Periodicals	8,946.00	5,090.00		14,036.00
<b>Total Supplies</b>	<b>\$19,187.00</b>	<b>\$8,122.00</b>		<b>\$32,611.00</b>
<b>800 Other Objects</b>				
810 Dues and Fees		690.00		6,544.00
<b>Total Other Objects</b>		<b>\$690.00</b>		<b>\$6,544.00</b>
<b>Total 2300 Support Services – Administration</b>	<b>\$267,602.00</b>	<b>\$227,309.00</b>	<b>\$570.00</b>	<b>\$940,217.00</b>

**General Fund (10)**

**2310 Board Services**

	<u>Elementary</u>	<u>Secondary</u>	<u>Federal</u>	<u>Total</u>
<b>100 Personnel Services – Salaries</b>				
100 Personnel Services – Salaries				1,000.00
<b>Total Personnel Services – Salaries</b>				<b>\$1,000.00</b>
<b>200 Personnel Services – Employee Benefits</b>				
220 Social Security Contributions				76.00
230 PSERS Retirement Contributions				300.00
250 Unemployment Compensation				1.00
260 Workers' Compensation				2.00
<b>Total Personnel Services – Employee Benefits</b>				<b>\$379.00</b>
<b>300 Purchased Professional and Technical Services</b>				
390 Other Purchased Professional and Technical Services				15,271.00
<b>Total Purchased Professional and Technical Services</b>				<b>\$15,271.00</b>
<b>500 Other Purchased Services</b>				
520 Insurance – General				974.00
549 Other Advertising/Public Relations				2,164.00
580 Travel				291.00
<b>Total Other Purchased Services</b>				<b>\$3,429.00</b>
<b>600 Supplies</b>				
610 General Supplies				220.00
<b>Total Supplies</b>				<b>\$220.00</b>
<b>800 Other Objects</b>				
810 Dues and Fees				3,975.00
<b>Total Other Objects</b>				<b>\$3,975.00</b>
<b>Total 2310 Board Services</b>				<b>\$24,274.00</b>

**General Fund (10)**

**2320 Board Treasurer Services**

**100 Personnel Services – Salaries**

100 Personnel Services – Salaries

**Total Personnel Services – Salaries**

**200 Personnel Services – Employee Benefits**

250 Unemployment Compensation

260 Workers' Compensation

**Total Personnel Services – Employee Benefits**

**Total 2320 Board Treasurer Services**

Elementary

Secondary

Federal

Total

3,750.00

**\$3,750.00**

4.00

35.00

**\$39.00**

**\$3,789.00**

**General Fund (10)**

	<u>Elementary</u>	<u>Secondary</u>	<u>Federal</u>	<u>Total</u>
<b>2330 Tax Assessment and Collection Services</b>				
<b>100 Personnel Services – Salaries</b>				
100 Personnel Services – Salaries				18,329.00
<b>Total Personnel Services – Salaries</b>				<b>\$18,329.00</b>
<b>200 Personnel Services – Employee Benefits</b>				
220 Social Security Contributions				1,402.00
<b>Total Personnel Services – Employee Benefits</b>				<b>\$1,402.00</b>
<b>300 Purchased Professional and Technical Services</b>				
330 Other Professional Services				24,513.00
<b>Total Purchased Professional and Technical Services</b>				<b>\$24,513.00</b>
<b>600 Supplies</b>				
610 General Supplies				3,096.00
<b>Total Supplies</b>				<b>\$3,096.00</b>
<b>Total 2330 Tax Assessment and Collection Services</b>				<b>\$47,340.00</b>

General Fund (10)

	<u>Elementary</u>	<u>Secondary</u>	<u>Federal</u>	<u>Total</u>
<b>2350 Legal and Accounting Services</b>				
<b>200 Personnel Services – Employee Benefits</b>				
210 Group Insurance – Contracted Provider				18,276.00
<b>Total Personnel Services – Employee Benefits</b>				<b>\$18,276.00</b>
<b>300 Purchased Professional and Technical Services</b>				
390 Other Purchased Professional and Technical Services				13,965.00
<b>Total Purchased Professional and Technical Services</b>				<b>\$13,965.00</b>
<b>600 Supplies</b>				
610 General Supplies				928.00
<b>Total Supplies</b>				<b>\$928.00</b>
<b>Total 2350 Legal and Accounting Services</b>				<b>\$33,169.00</b>



**General Fund (10)**

**2360 Office of the Superintendent / Executive Director Services**

	<u>Elementary</u>	<u>Secondary</u>	<u>Federal</u>	<u>Total</u>
<b>100 Personnel Services – Salaries</b>				
100 Personnel Services – Salaries				140,678.00
<b>Total Personnel Services – Salaries</b>				<b>\$140,678.00</b>
<b>200 Personnel Services – Employee Benefits</b>				
210 Group Insurance – Contracted Provider				75,564.00
220 Social Security Contributions				10,793.00
230 PSERS Retirement Contributions				41,705.00
250 Unemployment Compensation				136.00
260 Workers' Compensation				1,066.00
<b>Total Personnel Services – Employee Benefits</b>				<b>\$129,264.00</b>
<b>400 Purchased Property Services</b>				
440 Rentals				1,008.00
<b>Total Purchased Property Services</b>				<b>\$1,008.00</b>
<b>500 Other Purchased Services</b>				
580 Travel			25.00	3,058.00
<b>Total Other Purchased Services</b>			<b>\$25.00</b>	<b>\$3,058.00</b>
<b>600 Supplies</b>				
610 General Supplies				756.00
<b>Total Supplies</b>				<b>\$756.00</b>
<b>800 Other Objects</b>				
810 Dues and Fees				1,524.00
<b>Total Other Objects</b>				<b>\$1,524.00</b>
<b>Total 2360 Office of the Superintendent / Executive Director Services</b>			<b>\$25.00</b>	<b>\$276,288.00</b>

**General Fund (10)**

	<u>Elementary</u>	<u>Secondary</u>	<u>Federal</u>	<u>Total</u>
<b>2380 Office of the Principal Services</b>				
<b>100 Personnel Services – Salaries</b>				
100 Personnel Services – Salaries	139,984.00	125,327.00		265,311.00
<b>Total Personnel Services – Salaries</b>	<b>\$139,984.00</b>	<b>\$125,327.00</b>		<b>\$265,311.00</b>
<b>200 Personnel Services – Employee Benefits</b>				
210 Group Insurance – Contracted Provider	43,723.00	26,699.00		70,422.00
220 Social Security Contributions	10,717.00	9,607.00		20,324.00
230 PSERS Retirement Contributions	42,037.00	36,465.00		78,502.00
250 Unemployment Compensation	147.00	131.00		278.00
260 Workers' Compensation	1,581.00	1,359.00		2,940.00
<b>Total Personnel Services – Employee Benefits</b>	<b>\$98,205.00</b>	<b>\$74,261.00</b>		<b>\$172,466.00</b>
<b>300 Purchased Professional and Technical Services</b>				
329 Professional Educational Services – Other	1,929.00	2,631.00		4,560.00
390 Other Purchased Professional and Technical Services	2,802.00	1,605.00		4,407.00
<b>Total Purchased Professional and Technical Services</b>	<b>\$4,731.00</b>	<b>\$4,236.00</b>		<b>\$8,967.00</b>
<b>400 Purchased Property Services</b>				
430 Repairs and Maintenance Services	4,276.00	10,453.00		14,729.00
<b>Total Purchased Property Services</b>	<b>\$4,276.00</b>	<b>\$10,453.00</b>		<b>\$14,729.00</b>
<b>500 Other Purchased Services</b>				
530 Communications	106.00	601.00		707.00
550 Printing and Binding		1,281.00		1,281.00
580 Travel	1,113.00	2,338.00	545.00	3,996.00
<b>Total Other Purchased Services</b>	<b>\$1,219.00</b>	<b>\$4,220.00</b>	<b>\$545.00</b>	<b>\$5,984.00</b>
<b>600 Supplies</b>				
610 General Supplies	10,241.00	3,032.00		13,273.00
640 Books and Periodicals	8,946.00	5,090.00		14,036.00
<b>Total Supplies</b>	<b>\$19,187.00</b>	<b>\$8,122.00</b>		<b>\$27,309.00</b>
<b>800 Other Objects</b>				
810 Dues and Fees		690.00		690.00
<b>Total Other Objects</b>		<b>\$690.00</b>		<b>\$690.00</b>
<b>Total 2380 Office of the Principal Services</b>	<b>\$267,602.00</b>	<b>\$227,309.00</b>	<b>\$545.00</b>	<b>\$495,456.00</b>

**General Fund (10)**

	<u>Elementary</u>	<u>Secondary</u>	<u>Federal</u>	<u>Total</u>
<b>2390 Other Administration Services</b>				
<b>100 Personnel Services – Salaries</b>				
100 Personnel Services – Salaries				23,345.00
<b>Total Personnel Services – Salaries</b>				<b>\$23,345.00</b>
<b>200 Personnel Services – Employee Benefits</b>				
210 Group Insurance – Contracted Provider				22,161.00
220 Social Security Contributions				2,252.00
230 PSERS Retirement Contributions				8,812.00
250 Unemployment Compensation				30.00
260 Workers' Compensation				187.00
<b>Total Personnel Services – Employee Benefits</b>				<b>\$33,442.00</b>
<b>500 Other Purchased Services</b>				
580 Travel				2,457.00
<b>Total Other Purchased Services</b>				<b>\$2,457.00</b>
<b>600 Supplies</b>				
610 General Supplies				302.00
<b>Total Supplies</b>				<b>\$302.00</b>
<b>800 Other Objects</b>				
810 Dues and Fees				355.00
<b>Total Other Objects</b>				<b>\$355.00</b>
<b>Total 2390 Other Administration Services</b>				<b>\$59,901.00</b>

**General Fund (10)**

	<u>Elementary</u>	<u>Secondary</u>	<u>Federal</u>	<u>Total</u>
<b>2400 Support Services – Pupil Health</b>				
<b>100 Personnel Services – Salaries</b>				
100 Personnel Services – Salaries				71,046.00
<b>Total Personnel Services – Salaries</b>				<b>\$71,046.00</b>
<b>200 Personnel Services – Employee Benefits</b>				
210 Group Insurance – Contracted Provider				36,268.00
220 Social Security Contributions				5,435.00
230 PSERS Retirement Contributions				20,299.00
250 Unemployment Compensation				86.00
260 Workers' Compensation				547.00
<b>Total Personnel Services – Employee Benefits</b>				<b>\$62,635.00</b>
<b>300 Purchased Professional and Technical Services</b>				
330 Other Professional Services				2,690.00
<b>Total Purchased Professional and Technical Services</b>				<b>\$2,690.00</b>
<b>400 Purchased Property Services</b>				
430 Repairs and Maintenance Services				356.00
<b>Total Purchased Property Services</b>				<b>\$356.00</b>
<b>500 Other Purchased Services</b>				
530 Communications				10.00
580 Travel				766.00
<b>Total Other Purchased Services</b>				<b>\$776.00</b>
<b>600 Supplies</b>				
610 General Supplies				2,755.00
<b>Total Supplies</b>				<b>\$2,755.00</b>
<b>700 Property</b>				
762 Capitalized Equipment - Replacement				4,902.00
<b>Total Property</b>				<b>\$4,902.00</b>
<b>Total 2400 Support Services – Pupil Health</b>				<b>\$145,160.00</b>

**General Fund (10)**

**2440 Nursing Services**

**100 Personnel Services – Salaries**

100 Personnel Services – Salaries

	<u>Elementary</u>	<u>Secondary</u>	<u>Federal</u>	<u>Total</u>
				71,046.00

**Total Personnel Services – Salaries**

**\$71,046.00**

**200 Personnel Services – Employee Benefits**

210 Group Insurance – Contracted Provider

220 Social Security Contributions

230 PSERS Retirement Contributions

250 Unemployment Compensation

260 Workers' Compensation

				36,268.00
				5,435.00
				20,299.00
				86.00
				547.00

**Total Personnel Services – Employee Benefits**

**\$62,635.00**

**300 Purchased Professional and Technical Services**

330 Other Professional Services

				2,690.00
--	--	--	--	----------

**Total Purchased Professional and Technical Services**

**\$2,690.00**

**400 Purchased Property Services**

430 Repairs and Maintenance Services

				356.00
--	--	--	--	--------

**Total Purchased Property Services**

**\$356.00**

**500 Other Purchased Services**

530 Communications

580 Travel

				10.00
				766.00

**Total Other Purchased Services**

**\$776.00**

**600 Supplies**

610 General Supplies

				2,755.00
--	--	--	--	----------

**Total Supplies**

**\$2,755.00**

**700 Property**

762 Capitalized Equipment - Replacement

				4,902.00
--	--	--	--	----------

**Total Property**

**\$4,902.00**

**Total 2440 Nursing Services**

**\$145,160.00**

**General Fund (10)**

	<u>Elementary</u>	<u>Secondary</u>	<u>Federal</u>	<u>Total</u>
<b>2500 Support Services – Business</b>				
<b>100 Personnel Services – Salaries</b>				
100 Personnel Services – Salaries				83,293.00
<b>Total Personnel Services – Salaries</b>				<b>\$83,293.00</b>
<b>200 Personnel Services – Employee Benefits</b>				
210 Group Insurance – Contracted Provider				70,012.00
220 Social Security Contributions				6,380.00
230 PSERS Retirement Contributions				24,989.00
250 Unemployment Compensation				88.00
260 Workers' Compensation				625.00
<b>Total Personnel Services – Employee Benefits</b>				<b>\$102,094.00</b>
<b>300 Purchased Professional and Technical Services</b>				
330 Other Professional Services				3,078.00
<b>Total Purchased Professional and Technical Services</b>				<b>\$3,078.00</b>
<b>400 Purchased Property Services</b>				
430 Repairs and Maintenance Services				7,917.00
<b>Total Purchased Property Services</b>				<b>\$7,917.00</b>
<b>500 Other Purchased Services</b>				
530 Communications				2,955.00
550 Printing and Binding				1,522.00
580 Travel				442.00
<b>Total Other Purchased Services</b>				<b>\$4,919.00</b>
<b>600 Supplies</b>				
610 General Supplies				2,018.00
<b>Total Supplies</b>				<b>\$2,018.00</b>
<b>800 Other Objects</b>				
810 Dues and Fees				943.00
<b>Total Other Objects</b>				<b>\$943.00</b>
<b>Total 2500 Support Services – Business</b>				<b>\$204,262.00</b>

**General Fund (10)**

**2510 Fiscal Services**

	<u>Elementary</u>	<u>Secondary</u>	<u>Federal</u>	<u>Total</u>
<b>100 Personnel Services – Salaries</b>				
100 Personnel Services – Salaries				83,293.00
<b>Total Personnel Services – Salaries</b>				<b>\$83,293.00</b>
<b>200 Personnel Services – Employee Benefits</b>				
210 Group Insurance – Contracted Provider				70,012.00
220 Social Security Contributions				6,380.00
230 PSERS Retirement Contributions				24,989.00
250 Unemployment Compensation				88.00
260 Workers' Compensation				625.00
<b>Total Personnel Services – Employee Benefits</b>				<b>\$102,094.00</b>
<b>300 Purchased Professional and Technical Services</b>				
330 Other Professional Services				3,078.00
<b>Total Purchased Professional and Technical Services</b>				<b>\$3,078.00</b>
<b>400 Purchased Property Services</b>				
430 Repairs and Maintenance Services				7,917.00
<b>Total Purchased Property Services</b>				<b>\$7,917.00</b>
<b>500 Other Purchased Services</b>				
530 Communications				2,955.00
550 Printing and Binding				1,522.00
580 Travel				442.00
<b>Total Other Purchased Services</b>				<b>\$4,919.00</b>
<b>600 Supplies</b>				
610 General Supplies				2,018.00
<b>Total Supplies</b>				<b>\$2,018.00</b>
<b>800 Other Objects</b>				
810 Dues and Fees				943.00
<b>Total Other Objects</b>				<b>\$943.00</b>
<b>Total 2510 Fiscal Services</b>				<b>\$204,262.00</b>

**General Fund (10)**

	<u>Elementary</u>	<u>Secondary</u>	<u>Federal</u>	<u>Total</u>
<b>2511 Supervision of Fiscal Services - Head of Component</b>				
<b>100 <u>Personnel Services – Salaries</u></b>				
100 Personnel Services – Salaries				83,293.00
<b>Total Personnel Services – Salaries</b>				<b>\$83,293.00</b>
<b>200 <u>Personnel Services – Employee Benefits</u></b>				
210 Group Insurance – Contracted Provider				70,012.00
220 Social Security Contributions				6,380.00
230 PSERS Retirement Contributions				24,989.00
250 Unemployment Compensation				88.00
260 Workers' Compensation				625.00
<b>Total Personnel Services – Employee Benefits</b>				<b>\$102,094.00</b>
<b>300 <u>Purchased Professional and Technical Services</u></b>				
330 Other Professional Services				3,078.00
<b>Total Purchased Professional and Technical Services</b>				<b>\$3,078.00</b>
<b>400 <u>Purchased Property Services</u></b>				
430 Repairs and Maintenance Services				7,917.00
<b>Total Purchased Property Services</b>				<b>\$7,917.00</b>
<b>500 <u>Other Purchased Services</u></b>				
530 Communications				2,955.00
550 Printing and Binding				1,522.00
580 Travel				442.00
<b>Total Other Purchased Services</b>				<b>\$4,919.00</b>
<b>600 <u>Supplies</u></b>				
610 General Supplies				2,018.00
<b>Total Supplies</b>				<b>\$2,018.00</b>
<b>800 <u>Other Objects</u></b>				
810 Dues and Fees				943.00
<b>Total Other Objects</b>				<b>\$943.00</b>
<b>Total 2511 Supervision of Fiscal Services - Head of Component</b>				<b>\$204,262.00</b>



**General Fund (10)**

	<u>Elementary</u>	<u>Secondary</u>	<u>Federal</u>	<u>Total</u>
<b>2600 Operation and Maintenance of Plant Services</b>				
<b>100 Personnel Services – Salaries</b>				
100 Personnel Services – Salaries				413,136.00
<b>Total Personnel Services – Salaries</b>				<b>\$413,136.00</b>
<b>200 Personnel Services – Employee Benefits</b>				
210 Group Insurance – Contracted Provider				142,203.00
220 Social Security Contributions				31,609.00
230 PSERS Retirement Contributions				122,893.00
250 Unemployment Compensation				445.00
260 Workers' Compensation				3,046.00
<b>Total Personnel Services – Employee Benefits</b>				<b>\$300,196.00</b>
<b>300 Purchased Professional and Technical Services</b>				
329 Professional Educational Services – Other				10,445.00
330 Other Professional Services				13,959.00
<b>Total Purchased Professional and Technical Services</b>				<b>\$24,404.00</b>
<b>400 Purchased Property Services</b>				
410 Cleaning Services				7,803.00
420 Utility Services				88,454.00
430 Repairs and Maintenance Services				35,982.00
<b>Total Purchased Property Services</b>				<b>\$132,239.00</b>
<b>500 Other Purchased Services</b>				
521 Fire Insurance				25,833.53
522 Automotive Liability Insurance				5,861.00
523 General Property and Liability Insurance				7,504.47
530 Communications				22,623.00
580 Travel				68.00
<b>Total Other Purchased Services</b>				<b>\$61,890.00</b>
<b>600 Supplies</b>				
610 General Supplies	17,515.00	39,234.00		56,749.00
620 Energy				117,114.00
<b>Total Supplies</b>	<b>\$17,515.00</b>	<b>\$39,234.00</b>		<b>\$173,863.00</b>
<b>700 Property</b>				
752 Capital Equipment – Original and Additional				570.00
762 Capitalized Equipment - Replacement				37,350.00
<b>Total Property</b>				<b>\$37,920.00</b>
<b>800 Other Objects</b>				
810 Dues and Fees				74.00
<b>Total Other Objects</b>				<b>\$74.00</b>
<b>Total 2600 Operation and Maintenance of Plant Services</b>	<b>\$17,515.00</b>	<b>\$39,234.00</b>		<b>\$1,143,722.00</b>

**General Fund (10)**

**2610 Supervision of Operation and Maintenance of Plant Services**

Elementary

Secondary

Federal

Total

**100 Personnel Services – Salaries**

100 Personnel Services – Salaries

81,522.00

**Total Personnel Services – Salaries**

**\$81,522.00**

**200 Personnel Services – Employee Benefits**

210 Group Insurance – Contracted Provider

42,942.00

220 Social Security Contributions

6,241.00

230 PSERS Retirement Contributions

24,481.00

250 Unemployment Compensation

85.00

260 Workers' Compensation

593.00

**Total Personnel Services – Employee Benefits**

**\$74,342.00**

**Total 2610 Supervision of Operation and Maintenance of Plant Services**

**\$155,864.00**

**General Fund (10)**

**2611 Supervision of Operation and Maintenance of Plant Services – Head of Component**

	<u>Elementary</u>	<u>Secondary</u>	<u>Federal</u>	<u>Total</u>
<b>100 Personnel Services – Salaries</b>				
100 Personnel Services – Salaries				41,280.00
<b>Total Personnel Services – Salaries</b>				<b>\$41,280.00</b>
<b>200 Personnel Services – Employee Benefits</b>				
210 Group Insurance – Contracted Provider				22,406.00
220 Social Security Contributions				3,153.00
230 PSERS Retirement Contributions				12,358.00
250 Unemployment Compensation				43.00
260 Workers' Compensation				297.00
<b>Total Personnel Services – Employee Benefits</b>				<b>\$38,257.00</b>
<b>Total 2611 Supervision of Operation and Maintenance of Plant Services – Head of Component</b>				<b>\$79,537.00</b>

General Fund (10)

2619 Supervision of Operation and Maintenance of Plant Services – All Other Supervision

Elementary

Secondary

Federal

Total

100 Personnel Services – Salaries

100 Personnel Services – Salaries

40,242.00

**Total Personnel Services – Salaries**

**\$40,242.00**

200 Personnel Services – Employee Benefits

210 Group Insurance – Contracted Provider

20,536.00

220 Social Security Contributions

3,088.00

230 PSERS Retirement Contributions

12,123.00

250 Unemployment Compensation

42.00

260 Workers' Compensation

296.00

**Total Personnel Services – Employee Benefits**

**\$36,085.00**

**Total 2619 Supervision of Operation and Maintenance of Plant Services – All Other Supervision**

**\$76,327.00**

**General Fund (10)**

	<u>Elementary</u>	<u>Secondary</u>	<u>Federal</u>	<u>Total</u>
<b>2620 Operation of Buildings Services</b>				
<b>100 Personnel Services – Salaries</b>				
100 Personnel Services – Salaries				331,614.00
<b>Total Personnel Services – Salaries</b>				<b>\$331,614.00</b>
<b>200 Personnel Services – Employee Benefits</b>				
210 Group Insurance – Contracted Provider				99,261.00
220 Social Security Contributions				25,368.00
230 PSERS Retirement Contributions				98,412.00
250 Unemployment Compensation				360.00
260 Workers' Compensation				2,453.00
<b>Total Personnel Services – Employee Benefits</b>				<b>\$225,854.00</b>
<b>300 Purchased Professional and Technical Services</b>				
329 Professional Educational Services – Other				10,445.00
330 Other Professional Services				13,959.00
<b>Total Purchased Professional and Technical Services</b>				<b>\$24,404.00</b>
<b>400 Purchased Property Services</b>				
410 Cleaning Services				7,803.00
420 Utility Services				88,454.00
430 Repairs and Maintenance Services				35,982.00
<b>Total Purchased Property Services</b>				<b>\$132,239.00</b>
<b>500 Other Purchased Services</b>				
521 Fire Insurance				25,833.53
522 Automotive Liability Insurance				5,861.00
523 General Property and Liability Insurance				7,504.47
530 Communications				22,623.00
580 Travel				68.00
<b>Total Other Purchased Services</b>				<b>\$61,890.00</b>
<b>600 Supplies</b>				
610 General Supplies	17,515.00	39,234.00		56,749.00
620 Energy				117,114.00
<b>Total Supplies</b>	<b>\$17,515.00</b>	<b>\$39,234.00</b>		<b>\$173,863.00</b>
<b>700 Property</b>				
752 Capital Equipment – Original and Additional				570.00
762 Capitalized Equipment - Replacement				37,350.00
<b>Total Property</b>				<b>\$37,920.00</b>
<b>800 Other Objects</b>				
810 Dues and Fees				74.00
<b>Total Other Objects</b>				<b>\$74.00</b>
<b>Total 2620 Operation of Buildings Services</b>	<b>\$17,515.00</b>	<b>\$39,234.00</b>		<b>\$987,858.00</b>

**General Fund (10)**

	<u>Elementary</u>	<u>Secondary</u>	<u>Federal</u>	<u>Total</u>
<b>2700 Student Transportation Services</b>				
<b>100 Personnel Services – Salaries</b>				
100 Personnel Services – Salaries				5,975.00
<b>Total Personnel Services – Salaries</b>				<b>\$5,975.00</b>
<b>200 Personnel Services – Employee Benefits</b>				
210 Group Insurance – Contracted Provider				2,225.00
220 Social Security Contributions				457.00
230 PSERS Retirement Contributions				1,794.00
250 Unemployment Compensation				6.00
260 Workers' Compensation				39.00
<b>Total Personnel Services – Employee Benefits</b>				<b>\$4,521.00</b>
<b>500 Other Purchased Services</b>				
513 Contracted Carriers				540,389.00
<b>Total Other Purchased Services</b>				<b>\$540,389.00</b>
<b>Total 2700 Student Transportation Services</b>				<b>\$550,885.00</b>

General Fund (10)

2710 Supervision of Student Transportation Services	<u>Elementary</u>	<u>Secondary</u>	<u>Federal</u>	<u>Total</u>
<b>100 Personnel Services – Salaries</b>				
100 Personnel Services – Salaries				5,975.00
<b>Total Personnel Services – Salaries</b>				<b>\$5,975.00</b>
<b>200 Personnel Services – Employee Benefits</b>				
210 Group Insurance – Contracted Provider				2,225.00
220 Social Security Contributions				457.00
230 PSERS Retirement Contributions				1,794.00
250 Unemployment Compensation				6.00
260 Workers' Compensation				39.00
<b>Total Personnel Services – Employee Benefits</b>				<b>\$4,521.00</b>
<b>500 Other Purchased Services</b>				
513 Contracted Carriers				540,004.00
<b>Total Other Purchased Services</b>				<b>\$540,004.00</b>
<b>Total 2710 Supervision of Student Transportation Services</b>				<b>\$550,500.00</b>

**General Fund (10)**

**2711 Supervision of Student Transportation Services – Head of Component**

	<u>Elementary</u>	<u>Secondary</u>	<u>Federal</u>	<u>Total</u>
<b>100 Personnel Services – Salaries</b>				
100 Personnel Services – Salaries				5,975.00
<b>Total Personnel Services – Salaries</b>				<b>\$5,975.00</b>
<b>200 Personnel Services – Employee Benefits</b>				
210 Group Insurance – Contracted Provider				2,225.00
220 Social Security Contributions				457.00
230 PSERS Retirement Contributions				1,794.00
250 Unemployment Compensation				6.00
260 Workers' Compensation				39.00
<b>Total Personnel Services – Employee Benefits</b>				<b>\$4,521.00</b>
<b>500 Other Purchased Services</b>				
513 Contracted Carriers				540,004.00
<b>Total Other Purchased Services</b>				<b>\$540,004.00</b>
<b>Total 2711 Supervision of Student Transportation Services – Head of Component</b>				<b>\$550,500.00</b>



General Fund (10)

2750 Nonpublic Transportation

Elementary

Secondary

Federal

Total

500 Other Purchased Services

513 Contracted Carriers

385.00

**Total Other Purchased Services**

**\$385.00**

**Total 2750 Nonpublic Transportation**

**\$385.00**

**General Fund (10)**

	<u>Elementary</u>	<u>Secondary</u>	<u>Federal</u>	<u>Total</u>
<b>2800 Support Services – Central</b>				
<b>100 Personnel Services – Salaries</b>				
100 Personnel Services – Salaries			6,000.00	109,922.00
<b>Total Personnel Services – Salaries</b>			<b>\$6,000.00</b>	<b>\$109,922.00</b>
<b>200 Personnel Services – Employee Benefits</b>				
210 Group Insurance – Contracted Provider				44,537.00
220 Social Security Contributions				7,959.00
230 PSERS Retirement Contributions				31,160.00
250 Unemployment Compensation				109.00
260 Workers' Compensation				810.00
<b>Total Personnel Services – Employee Benefits</b>				<b>\$84,575.00</b>
<b>400 Purchased Property Services</b>				
430 Repairs and Maintenance Services				600.00
<b>Total Purchased Property Services</b>				<b>\$600.00</b>
<b>500 Other Purchased Services</b>				
580 Travel				528.00
<b>Total Other Purchased Services</b>				<b>\$528.00</b>
<b>600 Supplies</b>				
610 General Supplies				22,381.00
640 Books and Periodicals				4,050.00
650 Supplies & Fees – Technology Related				(1,430.00)
<b>Total Supplies</b>				<b>\$25,001.00</b>
<b>700 Property</b>				
752 Capital Equipment – Original and Additional				29,345.00
762 Capitalized Equipment - Replacement				50,475.00
<b>Total Property</b>				<b>\$79,820.00</b>
<b>Total 2800 Support Services – Central</b>			<b>\$6,000.00</b>	<b>\$300,446.00</b>

**General Fund (10)**

**2840 Data Processing Services**

**100 Personnel Services – Salaries**

100 Personnel Services – Salaries

**Total Personnel Services – Salaries**

**200 Personnel Services – Employee Benefits**

210 Group Insurance – Contracted Provider

220 Social Security Contributions

230 PSERS Retirement Contributions

250 Unemployment Compensation

260 Workers' Compensation

**Total Personnel Services – Employee Benefits**

**400 Purchased Property Services**

430 Repairs and Maintenance Services

**Total Purchased Property Services**

**500 Other Purchased Services**

580 Travel

**Total Other Purchased Services**

**600 Supplies**

610 General Supplies

640 Books and Periodicals

650 Supplies & Fees – Technology Related

**Total Supplies**

**700 Property**

752 Capital Equipment – Original and Additional

762 Capitalized Equipment - Replacement

**Total Property**

**Total 2840 Data Processing Services**

	<u>Elementary</u>	<u>Secondary</u>	<u>Federal</u>	<u>Total</u>
				103,922.00
				<b>\$103,922.00</b>
				44,537.00
				7,959.00
				31,160.00
				109.00
				810.00
				<b>\$84,575.00</b>
				600.00
				<b>\$600.00</b>
				528.00
				<b>\$528.00</b>
				22,381.00
				4,050.00
				(1,430.00)
				<b>\$25,001.00</b>
				29,345.00
				50,475.00
				<b>\$79,820.00</b>
				<b>\$294,446.00</b>

General Fund (10)

2850 State and Federal Agency Liaison Services

100 Personnel Services – Salaries

100 Personnel Services – Salaries

**Total Personnel Services – Salaries**

**Total 2850 State and Federal Agency Liaison Services**

Elementary

Secondary

Federal

Total

6,000.00

6,000.00

**\$6,000.00**

**\$6,000.00**

**\$6,000.00**

**\$6,000.00**

General Fund (10)

2900 Other Support Services

Elementary

Secondary

Federal

Total

500 Other Purchased Services

595 IU Payments By Withholding

5,112.00

**Total Other Purchased Services**

**\$5,112.00**

**Total 2900 Other Support Services**

**\$5,112.00**

General Fund (10)

2910 Support Services Not Listed Elsewhere In the 2000 Series

Elementary

Secondary

Federal

Total

500 Other Purchased Services

595 IU Payments By Withholding

5,112.00

**Total Other Purchased Services**

**\$5,112.00**

**Total 2910 Support Services Not Listed Elsewhere In the 2000 Series**

**\$5,112.00**

**General Fund (10)**

**3000 Operation of Non-Instructional Services**

Total

**100 Personnel Services – Salaries**

100 Personnel Services – Salaries

88,796.00

**Total Personnel Services – Salaries**

**\$88,796.00**

**200 Personnel Services – Employee Benefits**

220 Social Security Contributions

6,793.00

230 PSERS Retirement Contributions

23,257.00

250 Unemployment Compensation

65.00

260 Workers' Compensation

291.00

**Total Personnel Services – Employee Benefits**

**\$30,406.00**

**300 Purchased Professional and Technical Services**

390 Other Purchased Professional and Technical Services

54,958.00

**Total Purchased Professional and Technical Services**

**\$54,958.00**

**400 Purchased Property Services**

420 Utility Services

1,386.00

430 Repairs and Maintenance Services

5,000.00

**Total Purchased Property Services**

**\$6,386.00**

**500 Other Purchased Services**

510 Student Transportation Services

28,008.00

520 Insurance – General

5,500.00

580 Travel

1,535.00

**Total Other Purchased Services**

**\$35,043.00**

**600 Supplies**

610 General Supplies

25,597.00

640 Books and Periodicals

2,400.00

**Total Supplies**

**\$27,997.00**

**700 Property**

752 Capital Equipment – Original and Additional

750.00

762 Capitalized Equipment - Replacement

24,711.00

**Total Property**

**\$25,461.00**

**800 Other Objects**

810 Dues and Fees

7,066.00

**Total Other Objects**

**\$7,066.00**

**Total 3000 Operation of Non-Instructional Services**

**\$276,113.00**

**General Fund (10)**

**3200 Student Activities**

Elementary                      Secondary                      Federal                      Total

**100 Personnel Services – Salaries**

100 Personnel Services – Salaries 80,521.00

**Total Personnel Services – Salaries \$80,521.00**

**200 Personnel Services – Employee Benefits**

220 Social Security Contributions 6,160.00

230 PSERS Retirement Contributions 23,257.00

250 Unemployment Compensation 52.00

260 Workers' Compensation 221.00

**Total Personnel Services – Employee Benefits \$29,690.00**

**300 Purchased Professional and Technical Services**

390 Other Purchased Professional and Technical Services 54,958.00

**Total Purchased Professional and Technical Services \$54,958.00**

**400 Purchased Property Services**

420 Utility Services 1,386.00

430 Repairs and Maintenance Services 5,000.00

**Total Purchased Property Services \$6,386.00**

**500 Other Purchased Services**

510 Student Transportation Services 28,008.00

520 Insurance – General 5,500.00

580 Travel 1,535.00

**Total Other Purchased Services \$35,043.00**

**600 Supplies**

610 General Supplies 20,609.00

640 Books and Periodicals 2,400.00

**Total Supplies \$23,009.00**

**700 Property**

752 Capital Equipment – Original and Additional 750.00

762 Capitalized Equipment - Replacement 24,711.00

**Total Property \$25,461.00**

**800 Other Objects**

810 Dues and Fees 6,416.00

**Total Other Objects \$6,416.00**

**Total 3200 Student Activities \$261,484.00**



**General Fund (10)**

**3300 Community Services**

**100 Personnel Services – Salaries**

100 Personnel Services – Salaries

**Total Personnel Services – Salaries**

**200 Personnel Services – Employee Benefits**

220 Social Security Contributions

250 Unemployment Compensation

260 Workers' Compensation

**Total Personnel Services – Employee Benefits**

**600 Supplies**

610 General Supplies

**Total Supplies**

**800 Other Objects**

810 Dues and Fees

**Total Other Objects**

**Total 3300 Community Services**

Elementary

Secondary

Federal

Total

8,275.00

**\$8,275.00**

633.00

13.00

70.00

**\$716.00**

4,988.00

4,988.00

**\$4,988.00**

**\$4,988.00**

650.00

**\$650.00**

**\$4,988.00**

**\$14,629.00**

**General Fund (10)**

**5000 Other Expenditures and Financing Uses**

Total

**800 Other Objects**

830 Interest

44,206.00

**Total Other Objects**

**\$44,206.00**

**900 Other Uses of Funds**

910 Redemption of Principal

203,190.00

930 Fund Transfers

95,000.00

939 Other Fund Transfers

345,306.00

**Total Other Uses of Funds**

**\$643,496.00**

**Total 5000 Other Expenditures and Financing Uses**

**\$687,702.00**

General Fund (10)

	<u>Elementary</u>	<u>Secondary</u>	<u>Federal</u>	<u>Total</u>
5100 Debt Service / Other Expenditures and Financing Uses				
800 <u>Other Objects</u>				
830 Interest				44,206.00
<b>Total Other Objects</b>				<b>\$44,206.00</b>
900 <u>Other Uses of Funds</u>				
910 Redemption of Principal				203,190.00
<b>Total Other Uses of Funds</b>				<b>\$203,190.00</b>
<b>Total 5100 Debt Service / Other Expenditures and Financing Uses</b>				<b>\$247,396.00</b>

General Fund (10)

5110 Debt Service

Elementary

Secondary

Federal

Total

800 Other Objects

830 Interest

44,206.00

**Total Other Objects**

**\$44,206.00**

900 Other Uses of Funds

910 Redemption of Principal

203,190.00

**Total Other Uses of Funds**

**\$203,190.00**

**Total 5110 Debt Service**

**\$247,396.00**

General Fund (10)

5200 Interfund Transfers – Out

900 Other Uses of Funds

930 Fund Transfers

939 Other Fund Transfers

**Total Other Uses of Funds**

**Total 5200 Interfund Transfers – Out**

Elementary

Secondary

Federal

Total

95,000.00

345,306.00

**\$440,306.00**

**\$440,306.00**

General Fund (10)

	<u>Elementary</u>	<u>Secondary</u>	<u>Federal</u>	<u>Total</u>
5230 Capital Projects Fund Transfers				
900 <u>Other Uses of Funds</u>				
939 Other Fund Transfers				345,306.00
<b>Total Other Uses of Funds</b>				<b>\$345,306.00</b>
<b>Total 5230 Capital Projects Fund Transfers</b>				<b>\$345,306.00</b>

General Fund (10)

5250 Enterprise Fund Transfers

Elementary

Secondary

Federal

Total

900 Other Uses of Funds

930 Fund Transfers

95,000.00

**Total Other Uses of Funds**

**\$95,000.00**

**Total 5250 Enterprise Fund Transfers**

**\$95,000.00**

LEA : 106169003 Union SD

Printed 10/25/2017 8:55:39 AM

**Other Capital Projects Fund (39)**

**4000 Facilities Acquisition, Construction and Improvement Services**

Total

**400 Purchased Property Services**

430 Repairs and Maintenance Services

120,306.00

**Total Purchased Property Services**

**\$120,306.00**

**Total 4000 Facilities Acquisition, Construction and Improvement Services**

**\$120,306.00**



Other Capital Projects Fund (39)

4600 Existing Building Improvement Services

Elementary

Secondary

Federal

Total

400 Purchased Property Services

430 Repairs and Maintenance Services

120,306.00

**Total Purchased Property Services**

**\$120,306.00**

**Total 4600 Existing Building Improvement Services**

**\$120,306.00**

	<u>General Fund(10)</u>	<u>Public Purpose Trust(27)</u>	<u>Other Compt Approved</u> <u>(28)</u>	<u>Athletic / Activity(29)</u>	<u>Capital Reserve (690,</u> <u>1850)(31)</u>
<b>1000 Instruction</b>					
1100 Regular Programs - Elementary / Secondary	4,886,677.00				
1200 Special Programs - Elementary / Secondary	1,083,503.00				
1300 Vocational Education	304,015.00				
1400 Other Instructional Programs - Elementary / Secondary	19,357.00				
<b>Total Instruction</b>	<b>\$6,293,552.00</b>				
<b>2000 Support Services</b>					
2100 Support Services - Students	450,409.00				
2200 Support Services - Instructional Staff	110,416.00				
2300 Support Services - Administration	940,217.00				
2400 Support Services - Pupil Health	145,160.00				
2500 Support Services - Business	204,262.00				
2600 Operation and Maintenance of Plant Services	1,143,722.00				
2700 Student Transportation Services	550,885.00				
2800 Support Services - Central	300,446.00				
2900 Other Support Services	5,112.00				
<b>Total Support Services</b>	<b>\$3,850,629.00</b>				
<b>3000 Operation of Non-Instructional Services</b>					
3200 Student Activities	261,484.00				
3300 Community Services	14,629.00				
<b>Total Operation of Non-Instructional Services</b>	<b>\$276,113.00</b>				
<b>4000 Facilities Acquisition, Construction and Improvement Services</b>					
4600 Existing Building Improvement Services					
<b>Total Facilities Acquisition, Construction and Improvement Services</b>					
<b>5000 Other Expenditures and Financing Uses</b>					
5100 Debt Service / Other Expenditures and Financing Uses	247,396.00				
5200 Interfund Transfers - Out	440,306.00				
<b>Total Other Expenditures and Financing Uses</b>	<b>\$687,702.00</b>				
<b>TOTAL ACTUAL EXPENDITURES &amp; OTHER FINANCING USES</b>	<b>\$11,107,996.00</b>				

	<u>Capital Reserve (1431)(32)</u>	<u>Other Capital Projects Fund(39)</u>	<u>Debt Service(40)</u>	<u>Permanent(90)</u>	<u>Total</u>
<b>1000 Instruction</b>					
1100 Regular Programs - Elementary / Secondary					4,886,677.00
1200 Special Programs - Elementary / Secondary					1,083,503.00
1300 Vocational Education					304,015.00
1400 Other Instructional Programs - Elementary / Secondary					19,357.00
<b>Total Instruction</b>					<b>\$6,293,552.00</b>
<b>2000 Support Services</b>					
2100 Support Services - Students					450,409.00
2200 Support Services - Instructional Staff					110,416.00
2300 Support Services - Administration					940,217.00
2400 Support Services - Pupil Health					145,160.00
2500 Support Services - Business					204,262.00
2600 Operation and Maintenance of Plant Services					1,143,722.00
2700 Student Transportation Services					550,885.00
2800 Support Services - Central					300,446.00
2900 Other Support Services					5,112.00
<b>Total Support Services</b>					<b>\$3,850,629.00</b>
<b>3000 Operation of Non-Instructional Services</b>					
3200 Student Activities					261,484.00
3300 Community Services					14,629.00
<b>Total Operation of Non-Instructional Services</b>					<b>\$276,113.00</b>
<b>4000 Facilities Acquisition, Construction and Improvement Services</b>					
4600 Existing Building Improvement Services		120,306.00			120,306.00
<b>Total Facilities Acquisition, Construction and Improvement Services</b>		<b>\$120,306.00</b>			<b>\$120,306.00</b>
<b>5000 Other Expenditures and Financing Uses</b>					
5100 Debt Service / Other Expenditures and Financing Uses					247,396.00
5200 Interfund Transfers - Out					440,306.00
<b>Total Other Expenditures and Financing Uses</b>					<b>\$687,702.00</b>
<b>TOTAL ACTUAL EXPENDITURES &amp; OTHER FINANCING USES</b>		<b>\$120,306.00</b>			<b>\$11,228,302.00</b>

**PSERS Salary Data (Salary Data should relate to the General Fund only)**

<b>Amount Description</b>	<b>Amount</b>
Total Salary Base for salaries subject to PSERS withholding	4,667,609.53
Total Federally Funded salaries subject to PSERS withholding	121,832.00
	<hr/>

**Title I Expenditure Data**

<b>Amount Description</b>	<b>Amount</b>
Expenditures Funded with Current Title I Funds	160,690.00
Expenditures Funded with Carry over Title I Funds	
<b>Total Title I Expenditure Data</b>	<b>\$160,690.00</b>
	<hr/>

**Title I ARRA Amount**

<b>Amount Description</b>	<b>Amount</b>
Portion of Total Title I Expenditures funded with ARRA Title I	
	<hr/>

**Benefits for Staff Relative to Collective Bargaining Agreements**

	OBJECT	COVERED	NOT COVERED	TOTAL
<b>10 General Fund</b>	No Self Insurance data to report			
	211 Medical Insurance	1,058,241.37	305,593.80	1,363,835.17
	212 Dental Insurance	64,365.51	14,659.38	79,024.89
	215 Eye Care Insurance	10,675.02	3,078.88	13,753.90
	216 Prescription Insurance			
	271 Self-Insurance Medical Benefits			
	272 Self-Insurance Dental Benefits			
	275 Self-Insurance Eye Care Benefits			
	276 Self-Insurance Prescription Benefits			
	<b>FUND TOTAL</b>	<b>\$1,133,281.90</b>	<b>\$323,332.06</b>	<b>\$1,456,613.96</b>
<b>50 Enterprise Fund</b>	No Self Insurance data to report			
	211 Medical Insurance			
	212 Dental Insurance			
	215 Eye Care Insurance			
	216 Prescription Insurance			
	271 Self-Insurance Medical Benefits			
	272 Self-Insurance Dental Benefits			
	275 Self-Insurance Eye Care Benefits			
	276 Self-Insurance Prescription Benefits			
	<b>FUND TOTAL</b>			
<b>60 Internal Service Fund</b>	No Self Insurance data to report			
	211 Medical Insurance			
	212 Dental Insurance			
	215 Eye Care Insurance			
	216 Prescription Insurance			
	271 Self-Insurance Medical Benefits			
	272 Self-Insurance Dental Benefits			
	275 Self-Insurance Eye Care Benefits			
	276 Self-Insurance Prescription Benefits			
	<b>FUND TOTAL</b>			
<b>Total of All Funds</b>		<b>\$1,133,281.90</b>	<b>\$323,332.06</b>	<b>\$1,456,613.96</b>

Function	Special Education (Prior Year)	Nonspecial Education (Prior Year)	Total (Prior Year)	Special Education (Current Year)	Nonspecial Education (Current Year)	Total (Current Year)
2120 Guidance Services	32,897.00	160,615.00	193,512.00	40,180.00	171,292.00	211,472.00
2140 Psychological Services	95,367.00	10,596.00	105,963.00	100,793.00	11,199.00	111,992.00
2150 Speech Pathology and Audiology Services	65,064.00		65,064.00	70,130.00		70,130.00
2160 Social Work Services						
2260 Instruction and Curriculum Development Services						
2350 Legal and Accounting Services	2,144.00	33,597.00	35,741.00	1,990.00	31,179.00	33,169.00
2420 Medical Services						
2440 Nursing Services	23,955.00	116,954.00	140,909.00	27,580.00	117,580.00	145,160.00
2700 Student Transportation Services	136,093.00	407,929.00	544,022.00	114,979.00	435,521.00	550,500.00
<b>Total</b>	<b>\$355,520.00</b>	<b>\$729,691.00</b>	<b>\$1,085,211.00</b>	<b>\$355,652.00</b>	<b>\$766,771.00</b>	<b>\$1,122,423.00</b>

(PRINCIPAL AMOUNTS ONLY)

**GOVERNMENTAL FUNDS/ ACTIVITIES**

	Short-Term Borrowing	General Obligation Bonds/Notes	Authority Building Obligations	Other Long-Term Debt	Other Post- Employment Benefits (OPEB)	Compensated Absences	Net Pension Liability	Total
1. Debt at Beginning of Fiscal Year		2,688,000.00			1,002,899.00	70,350.00	15,377,000.00	19,138,249.00
2. Additional Debt Incurred During Year					297,782.00	1,575.00	2,216,000.00	2,515,357.00
3. Retirements and Repayments		203,190.00						203,190.00
4. Debt at End of Fiscal Year		2,484,810.00			1,300,681.00	71,925.00	17,593,000.00	21,450,416.00
5. Accreted Interest at End Of Fiscal Year								
6. Total Debt and Accreted Interest		2,484,810.00			1,300,681.00	71,925.00	17,593,000.00	21,450,416.00
7. Current Portion P&I - Due within 1 year		339,365.00						339,365.00
8. Interest Paid during current fiscal year		44,206.00						44,206.00

(PRINCIPAL AMOUNTS ONLY)

**PROPRIETARY FUNDS**

1. Debt at Beginning of Fiscal Year
2. Additional Debt Incurred During Year
3. Retirements and Repayments
4. Debt at End of Fiscal Year
5. Accreted Interest at End Of Fiscal Year
6. Total Debt and Accreted Interest
7. Current Portion P&I - Due within 1 year
8. Interest Paid during current fiscal year

**Total Principal and Interest Payments Made by Your School - All Funds**

Function	Fund		Principal (910)	Principal (920)	Interest (830)	Total (Principal +Interest)	Misc Other Uses (990)
5110	10	General Fund	203,190.00		44,206.00	247,396.00	
5110	20	Special Revenue Funds					
5110	30	Capital Projects Funds					
5110	40	Debt Service Fund					
5110	90	Permanent Fund					
5120	10	General Fund					
5120	20	Special Revenue Funds					
5120	30	Capital Projects Funds					
5120	40	Debt Service Fund					
<b>Total Debt Payments - Governmental Funds</b>			<b>\$203,190.00</b>		<b>\$44,206.00</b>	<b>\$247,396.00</b>	

Function	Fund		Principal (910)	Principal (920)	Interest (830)	Total (Principal +Interest)
5110	50	Enterprise Fund				
5110	60	Internal Service Fund				
5120	50	Enterprise Fund				
5120	60	Internal Service Fund				
<b>Total Debt Payments - Proprietary Funds</b>						



**Debt Details**  
**Governmental Funds/ Activities**

Debt Category	Debt Issue Date (MM/YYYY)	Debt at Beginning of Fiscal Year	Principal Amounts Only		Debt at End of Fiscal Year	Current Portion Due Within One Year (Principal and Interest)	Interest Paid During Fiscal Year
			Additions	Reductions / Repayments			
General Obligation Bonds/Notes – CIB	06/2016	2,688,000.00		203,190.00	2,484,810.00	339,365.00	44,206.00
Compensated Absences		70,350.00	1,575.00		71,925.00		
Other Post-Employment Benefits (OPEB)		1,002,899.00	297,782.00		1,300,681.00		
Net Pension Liability		15,377,000.00	2,216,000.00		17,593,000.00		
<b>Totals for Debt Entered:</b>		<b>\$19,138,249.00</b>	<b>\$2,515,357.00</b>	<b>\$203,190.00</b>	<b>\$21,450,416.00</b>	<b>\$339,365.00</b>	<b>\$44,206.00</b>

**General Fund (10)**

**Section 1: Tuition/Purchased Services as Reported within Expenditure Detail**

	Amount
Tuition Reported in General Fund Expenditures 1000-560	702,818.00
Purchased Services in General Fund Expenditures 1000-594 and 1000-597	
<b>Section 1 Total</b>	<b>\$702,818.00</b>

**Section 2: Tuition Paid to Institution Types During Fiscal Year**

	Tuition Paid For Nonspecial Education	Tuition Paid For Special Education	Total
1 1306 Institutions			
2 Institutionalized Children's Programs			
3 Juveniles Incarcerated in Adult Facilities			
4 Residential Treatment Facilities			
5 Other Local Education Agencies	8,380.00		8,380.00
6 Brick and Mortar Charter Schools			
7 Cyber Charter Schools	290,372.00	96,250.00	386,622.00
8 Career and Technology Centers	210,169.00		210,169.00
9 Approved Private Schools			
10 PA Chartered Schools for the Deaf and Blind			
11 Private Residential Rehabilitative Institutions	137.00	8,940.00	9,077.00
12 Juvenile Detention Centers			
13 Special Program Jointures			
14 Other Tuition Not Included Elsewhere In This Section	8,695.00	79,875.00	88,570.00
<b>Section 2 Total</b>	<b>\$517,753.00</b>	<b>\$185,065.00</b>	<b>\$702,818.00</b>

1 .	<u>Student Transportation Services for Educational Field Trips</u>	5,250.15
2 .	<u>Student Transportation Services for Student Activities</u>	1,975.73
3 .	<u>Rental of Vehicles for Student Transportation Services</u>	
4 .	<u>Capital Reserve Funds</u>	

Include only district-owned transportation expenditures paid from State or local money.

DO NOT include federal expenditures or payments to contract service providers.

Contracted transportation services should not be recorded on this schedule.

**Food Service / Cafeteria Operations Fund (51)**

**3000 Operation of Non-Instructional Services**

**100 Personnel Services – Salaries**

100 Personnel Services – Salaries

114,937.20

**Total Personnel Services – Salaries**

**\$114,937.20**

**200 Personnel Services – Employee Benefits**

210 Group Insurance – Contracted Provider

73,107.41

220 Social Security Contributions

7,101.35

230 PSERS Retirement Contributions

27,609.48

250 Unemployment Compensation

482.03

260 Workers' Compensation

70.77

**Total Personnel Services – Employee Benefits**

**\$108,371.04**

**400 Purchased Property Services**

410 Cleaning Services

3,016.00

430 Repairs and Maintenance Services

1,956.00

**Total Purchased Property Services**

**\$4,972.00**

**500 Other Purchased Services**

580 Travel

3,348.00

**Total Other Purchased Services**

**\$3,348.00**

**600 Supplies**

610 General Supplies

13,221.96

630 Food

**Total Supplies**

**\$13,221.96**

**800 Other Objects**

800 Other Objects

**Total Other Objects**

**Total 3000 Operation of Non-Instructional Services**

**\$244,850.20**

**Food Service / Cafeteria Operations Fund (51)**

	<u>Elementary</u>	<u>Secondary</u>	<u>Federal</u>	<u>Total</u>
<b>3100 Food Services</b>				
<b>100 Personnel Services – Salaries</b>				
100 Personnel Services – Salaries			70,663.26	114,937.20
<b>Total Personnel Services – Salaries</b>			<b>\$70,663.26</b>	<b>\$114,937.20</b>
<b>200 Personnel Services – Employee Benefits</b>				
210 Group Insurance – Contracted Provider				73,107.41
220 Social Security Contributions				7,101.35
230 PSERS Retirement Contributions				27,609.48
250 Unemployment Compensation				482.03
260 Workers' Compensation				70.77
<b>Total Personnel Services – Employee Benefits</b>				<b>\$108,371.04</b>
<b>400 Purchased Property Services</b>				
410 Cleaning Services				3,016.00
430 Repairs and Maintenance Services				1,956.00
<b>Total Purchased Property Services</b>				<b>\$4,972.00</b>
<b>500 Other Purchased Services</b>				
580 Travel				3,348.00
<b>Total Other Purchased Services</b>				<b>\$3,348.00</b>
<b>600 Supplies</b>				
610 General Supplies				13,221.96
630 Food			143,529.40	
<b>Total Supplies</b>			<b>\$143,529.40</b>	<b>\$13,221.96</b>
<b>800 Other Objects</b>				
800 Other Objects			12,699.02	
<b>Total Other Objects</b>			<b>\$12,699.02</b>	
<b>Total 3100 Food Services</b>			<b>\$226,891.68</b>	<b>\$244,850.20</b>

	<u>Food Service(51)</u>	<u>Child Care Operations(52)</u>	<u>Other Enterprise(58)</u>	<u>Internal Service(60)</u>	<u>Total</u>
<b>3000 <u>Operation of Non-Instructional Services</u></b>					
3100 Food Services		244,850.20			244,850.20
<b>Total Operation of Non-Instructional Services</b>		<b>\$244,850.20</b>			<b>\$244,850.20</b>
<b>TOTAL ACTUAL EXPENDITURES &amp; OTHER FINANCING USES</b>		<b>\$244,850.20</b>			<b>\$244,850.20</b>